

7 Days in Paris, France

Friday, 14-Feb-2025 - Thursday, 20-Feb-2025



The City of Lights and love, the capital of elegance and romance, a place of timeless beauty, marvel monuments, and outstanding art. Paris is a dreamy destination and a must on every traveler's wish list.

A mix of old and new, rich history, splendor palaces, and exquisite architecture, visiting Paris is like stepping back in time but via a modern vehicle. The comprehensive itinerary will take you through Paris' enthralling streets and spectacular gardens, and will reveal to you the city's intoxicating charm. We will navigate your way through all of Paris's most iconic places, unveil all the hotspots, and make sure you will not miss any landmark.

A week with all of Paris highlights, from the marvelous Eiffel

Tower to splendid Montmartre and even the spectacular Palace of Versailles. Paris itinerary will unfold all you need to see and know about the city, including directions, tips of do and not to, what to avoid, where to eat, and where to buy attractions' tickets.

Transport Travel Cards

See full information about [travel passes and prices](#) at the RATP website, the operator of Paris public transport.

Restaurants and Cafés Tipping

Tipping in France's restaurants or cafés is not a must. However, it will be kind to tip 5% - 10% of the meal's bill if you are satisfied with the service.

Try to Learn Basic French

The Parisians will not expect you to know French, but few basic words will show goodwill and kindness and therefore are appreciated by the locals.

Payments

At shops and grocery stores, prepare your means of payments in advance, Parisians tend to be impatient with delays.

Trip Summary

Day 1 - Friday, 14-Feb-2025

- ① 09:30 Musee D'Orsay, Paris [Google Maps](#)
- ② 13:00 Les Invalides, Paris [Google Maps](#)
- ③ 16:00 Champ de Mars, Paris [Google Maps](#)
- ④ 16:30 Eiffel Tower, Paris [Google Maps](#)
- ⑤ 18:30 20 Eiffel, Paris [Google Maps](#)
- ⑥ 19:30 Trocadéro Gardens, Paris [Google Maps](#)

Day 2 - Saturday, 15-Feb-2025

- ① 10:00 Pont Alexandre III, Paris [Google Maps](#)
- ② 11:30 Petit Palais, Paris [Google Maps](#)
- ③ 13:30 Grand Palais, Paris [Google Maps](#)
- ④ 16:00 Champs-Élysées, Paris [Google Maps](#)
- ⑤ 17:30 Arc de Triomphe, Paris [Google Maps](#)

Day 3 - Sunday, 16-Feb-2025

- ① 10:00 Notre Dame, Paris [Google Maps](#)

- ② Point zéro des routes de France, Paris [Google Maps](#)
- ③ 11:00 Shakespeare and Company, Paris [Google Maps](#)
- ④ 11:30 Église Saint-Séverin, Paris [Google Maps](#)
- ⑤ 12:00 Sorbonne, Paris [Google Maps](#)
- ⑥ 13:00 Panthéon, Paris [Google Maps](#)
- ⑦ 14:30 Luxembourg Gardens, Paris [Google Maps](#)
- ⑧ 16:30 Église Saint-Sulpice, Paris [Google Maps](#)
- ⑨ 17:30 Eggs&Co., Paris [Google Maps](#)
- ⑩ 18:00 Saint-Germain-des-Prés, Paris [Google Maps](#)

Day 4 - Monday, 17-Feb-2025

- ① 09:30 Saint-Eustache, Paris, Paris [Google Maps](#)
- ② 10:30 The Centre Pompidou, Paris [Google Maps](#)
- ③ 13:00 Hôtel de Ville, Paris [Google Maps](#)
- ④ 13:30 Sainte-Chapelle, Paris [Google Maps](#)
- ⑤ 15:00 Pont Neuf, Paris [Google Maps](#)
- ⑥ 16:00 Le Fumoir, Paris [Google Maps](#)

Day 5 - Tuesday, 18-Feb-2025

- ① 09:00 Palais-Royal, Paris [Google Maps](#)
- ② Studio-Théâtre de la Comédie-Française, Paris [Google Maps](#)
- ③ 10:00 Louvre Museum, Paris [Google Maps](#)
- ④ 15:30 Pont des Arts, Paris [Google Maps](#)
- ⑤ 16:30 Tuileries Garden, Paris [Google Maps](#)

Day 6 - Wednesday, 19-Feb-2025

- ① 10:00 Sacré-Cœur, Paris [Google Maps](#)
- ② 11:00 Place du Tertre, Paris [Google Maps](#)
- ③ 11:30 Dalí Paris [Google Maps](#)
- ④ 12:30 Wall of Love, Paris [Google Maps](#)
- ⑤ Abbesses, Paris [Google Maps](#)
- ⑥ 14:00 Galeries Lafayette Haussmann, Paris [Google Maps](#)
- ⑦ 15:00 Yann Couvreur Galeries Lafayette Gourmet, Paris [Google Maps](#)
- ⑧ 15:30 Palais Garnier, Paris [Google Maps](#)
- ⑨ 17:30 Madeleine Church, Paris [Google Maps](#)

⑩ 18:30 Place de la Concorde, Paris

[Google Maps](#)

Day 7 - Thursday, 20-Feb-2025

① 08:30 Invalides, Paris

[Google Maps](#)

② 09:30 Gare Rive Gauche, Versailles

[Google Maps](#)

③ 10:00 Palace of Versailles, Versailles

[Google Maps](#)

④ Jardins du Château de Versailles,
Versailles

[Google Maps](#)

⑤ Park of Versailles, Versailles

[Google Maps](#)

⑥ The Grand Trianon, Versailles

[Google Maps](#)

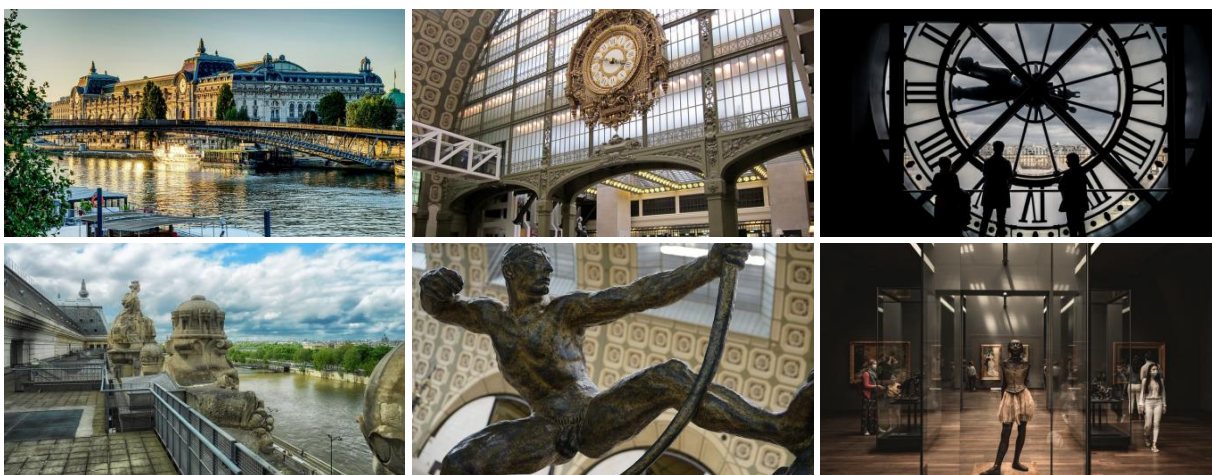
⑦ Marie-Antoinette's Estate, Versailles

[Google Maps](#)

① **09:30 - 12:30** **Musee D'Orsay, Paris**

Musee D'Orsay, 75007 Paris, France

Part of the D'Orsay Museum's charm is the building, which used to be a railway station (Gare d'Orsay). The remarkable building itself looks like artwork and is a splendid decoration to the masterpiece this museum contains. And like some of the iconic landmarks in Paris, the Musee D'Orsay building, then Gare d'Orsay, was ready just in time for the 1900 Paris Exposition (Exposition Universelle). The lovely museum located on the bank of the river Seine has many wonderful French artworks from the middle of the 19th century to the beginning of the 20th century. D'Orsay Museum also exhibits a fantastic collection of Impressionist and post-Impressionist paintings. Gauguin, Cézanne, Renoir, Manet, Degas, Monet, and Van Gogh if to name a few, are among the remarkable artist this museum display their masterpieces.



[Google Maps](#)

[Tickets](#)

[Nearby Hotels](#)

② 13:00 - 15:30 Les Invalides, Paris

129 Rue de Grenelle, 75007 Paris, France

Les Invalides is a beautifully designed 17th-century complex and landmark in Paris you should not miss. Originally, it serves war veterans and includes a hospital. Today the imposing place is mostly known for Dôme des Invalides, a royal church with a winsome golden dome that serves as Napoleon's last resting place. The place also contains Musée de l'Armée, Musée de l'Ordre de la Libération, and Musée des Plans-Reliefs, all related to France's military history.



[Google Maps](#)

[Tickets](#)

[Nearby Hotels](#)

③ 16:00 - 16:30 Champ de Mars, Paris

2 All. Adrienne Lecouvreur, 75007 Paris, France

From Eiffel Tower to École Militaire, Champ de Mars is a magnificently designed urban green lung in Paris. As a central and large open space, Champ de Mars was chosen as the location for part of the French Revolution's celebrations and hosts the Expositions Universelles, Paris's famous World's Fairs. The place, which was open in 1780, is always bustling, full of

Parisians and tourists who wish to enjoy the green lawns and superb view of the Eiffel Tower. It is an ideal place to absorb Paris's vibrant atmosphere, have a picnic, or just wander around in one of Paris's best areas.



[Google Maps](#)

[Tickets](#)

[Nearby Hotels](#)

④ **16:30 - 18:30 Eiffel Tower, Paris**

Champ de Mars, 5 Av. Anatole France, 75007 Paris, France

La tour Eiffel is more than just a landmark, it's Paris itself. Monumental, full of charm, elegant, romantic, and with outstanding architecture. Built by Gustave Eiffel's company and named after him, the tower was inaugurated in 1889 for Paris World's Fair, Exposition Universelle. The tower was built to mark and honor the 100th year of the end of the French Revolution. While the beginning was controversial, Eiffel Tower becomes one of the most famous and visited monuments in the world. The Eiffel Tower is hypnotizing, it's catching the eye and has a mesmerizing view from above. Therefore, it is most recommended to visit the 2nd and 3rd floors of the tower, to see a breathtaking view of Paris, especially after dark.



[Google Maps](#)

[Tickets](#)

[Nearby Hotels](#)

⑤ **18:30 - 19:00 20 Eiffel, Paris**

20 Rue de Monttessuy, 75007 Paris, France

20 Eiffel offers Fantastic high-quality French cuisine and exceptional view. A moment from Eiffel Tower, 20 Eiffel is a Michelin restaurant where you can eat excellent and delicious gourmet food, sit outside, and have a few more moments with the iconic tower. The restaurant is a lovely option to eat and refresh before you end your travel day.



[Google Maps](#)

[Tickets](#)

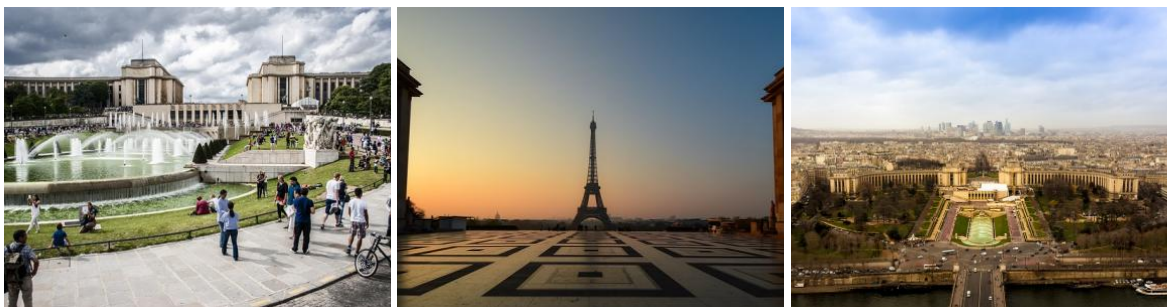
[Nearby Hotels](#)

⑥ 19:30 - 20:00 Trocadéro Gardens, Paris

Pl. du Trocadéro et du 11 Novembre, 75016 Paris, France

It doesn't matter if it's your first time in Paris, or one of many visits, the sight of the Eiffel Tower is always moving. And there is no better place for the Eiffel Tower to be revealed than Jardins du Trocadéro. The Gardens were originally inaugurated in 1878 as the garden of Palais du Trocadéro, for Paris World's Fair (Exposition Universelle). Today's gardens, however, which include around 94,000 sqm, were re-built and designed for the 1937's Paris World's Fair.

The marvelous gardens include the "Fountain of Warsaw", which is composed of an array of fountains and water cannons, that granted the gardens and the Eiffel, a spectacular view. On the top, you can find Palais de Chaillot (built on the ruins of Palais du Trocadéro) which hosts museums, a theater, a restaurant, and a Café. Another attraction you can find in the gardens is Aquarium de Paris (Paris Aquarium) which is a wonderful activity for families.



[Google Maps](#)

[Tickets](#)

[Nearby Hotels](#)

① **10:00 - 11:30 Pont Alexandre III, Paris**

Pont Alexandre III, 75008 Paris, France

Pont Alexandre III is one of Paris's iconic landmarks and maybe the most gorgeous bridge in the city. As nearby Grand Palais and Petit Palais, Pont Alexandre III was built for 1900 Exposition Universelle (Universal Exposition). Impressive sculptures with touches of gold are scattered along the bridge together with splendid Art Nouveau lamps. Pont Alexandre III's central location, and the view of some of Paris's architectural wonders when you cross it, make this bridge a must-see.



[Google Maps](#)

[Tickets](#)

[Nearby Hotels](#)

② **11:30 - 13:00 Petit Palais, Paris**

Av. Winston Churchill, 75008 Paris, France

Wonderful building with enchanting architecture that was built for 1900 Exposition Universelle (Universal Exposition). Today, the place is home to Musée des Beaux-Arts de la Ville de Paris, which

has a fantastic collection of notable French and other European artists' artworks. The Petit Palais is located near to the Grand Palais, which together provides another glimpse of the alluring French architecture.



[Google Maps](#)

[Tickets](#)

[Nearby Hotels](#)

③ 13:30 - 15:30 Grand Palais, Paris

3 Av. du Général Eisenhower, 75008 Paris, France

Just like the Petit Palais, the Grand Palais was built for the 1900 Exposition Universelle (Universal Exposition). The building which has a captivating dome made of glass consists of Nave, National Galleries, and Palais de la Découverte. The National Galleries exhibit fantastic exhibitions, and Palais de la Découverte is used as a science museum. During the years, Grand Palais serves France and the Parisians in main national and international events belonging to the art and education realms. Grand Palais shows, once again and without doubt, French architecture and arts excellence.



[Google Maps](#)

[Tickets](#)

[Nearby Hotels](#)

④ 16:00 - 17:00 Champs-Élysées, Paris

Champs-Élysées, Paris, France

A world-famous avenue, synonym to luxury, splendor, fashion, and opulence. The 1.9 kilometers splendid avenue is full of grandiose stores, beautiful gardens, and fancy restaurants and cafes.



[Google Maps](#)

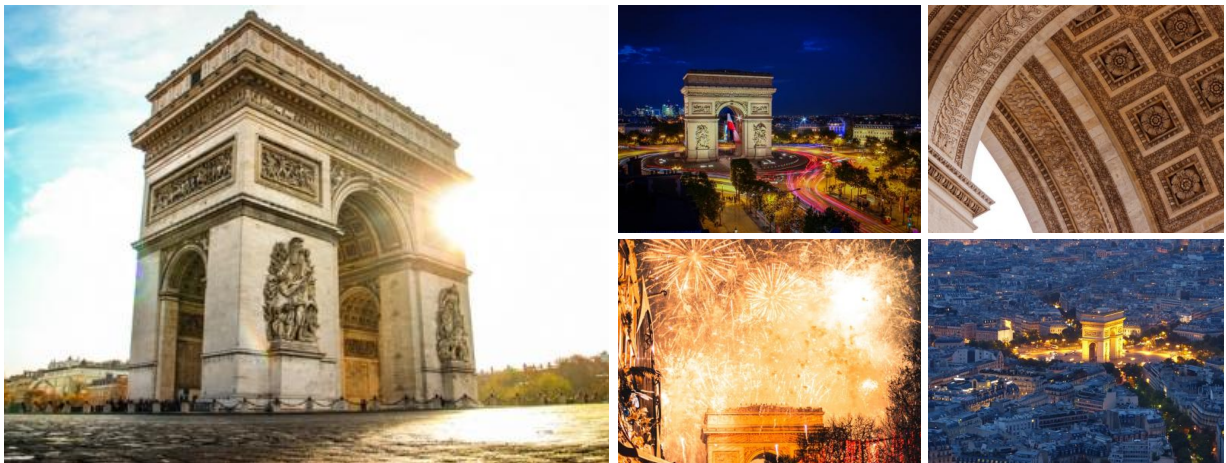
[Tickets](#)

[Nearby Hotels](#)

⑤ 17:30 - 19:00 Arc de Triomphe, Paris

Pl. Charles de Gaulle, 75008 Paris, France

Arc de Triomphe is one of France's most notable symbols. It is located in Place Charles de Gaulle and is connected to the famous avenue, Champs-Élysées. Designed by Jean-François Chalgrin and inaugurated in 1836, Arc de Triomphe is approximately 50-meter high, 22 meters wide, and about 45 meters long. The impressive arc was established to respect the fallen French soldiers. Those who died during the Revolution, Napoleonic Wars, and those who fought for the country during those turbulent times. Every day, at 18:30, you will be able to see the flame of remembrance, as a tribute of the French nation in honor of its fallen soldiers.



[Google Maps](#)

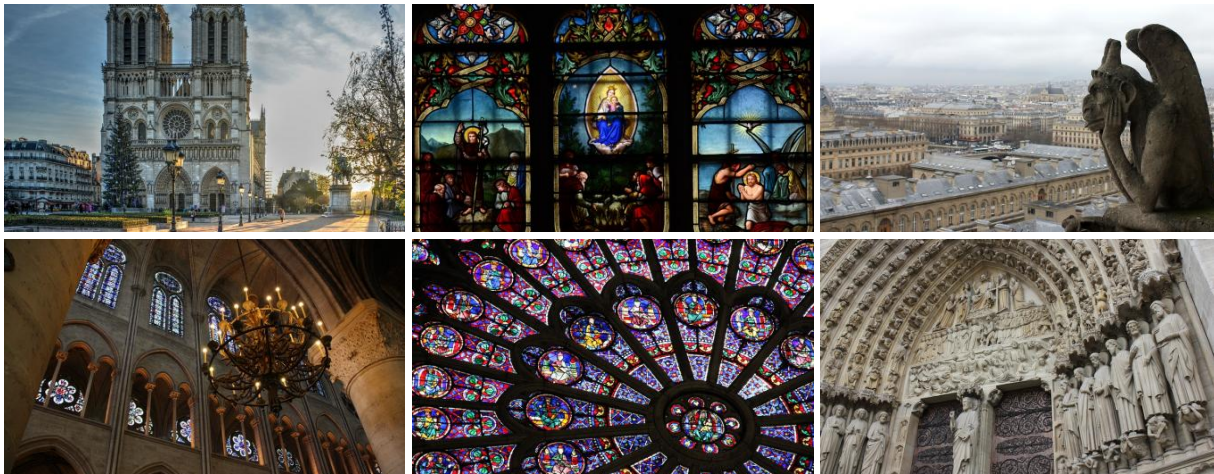
[Tickets](#)

[Nearby Hotels](#)

① 10:00 - 11:00 Notre Dame, Paris

Notre Dame, Paris, France

Notre-Dame de Paris is a Gothic Catholic cathedral church and one of the most famous icons of Paris and faith. The Cathedral was built during the middle-ages and has a very long history which entwined with Paris history. It became an icon, also thanks to brilliant Victor Hugo's "The Hunchback of Notre-Dame" which excites the imagination of readers since 1831. Unfortunately, the place burned in April 2019 and is undergoing a massive reconstruction. Despite this, the Cathedral and its surrounding are still very much worth watching.



[Google Maps](#)

[Tickets](#)

[Nearby Hotels](#)

② Point zéro des routes de France, Paris

Parvis Notre-Dame - Pl. Jean-Paul II, 75004 Paris, France

Paris's Kilometer Zero or Point Zero is the starting point of all the roads. But it is more than a geographical milestone. The belief is

that if you stand on the Kilometer Zero's marker, you will always return to Paris. So if you wish to return to Paris in the future, help that wish to come true by standing on Kilometer Zero. You will find the hotspot, right in front of the Notre Dame Cathedral entrance.



[Google Maps](#)

[Tickets](#)

[Nearby Hotels](#)

③ 11:00 - 11:30 Shakespeare and Company, Paris

37 Rue de la Bûcherie, 75005 Paris, France

Magnificent English bookstore with a rich history and enchanting bohemian atmosphere. The store is located near Notre Dame Cathedral and was opened by the American George Whitman in 1951 in a 17th-century building that used to be a monastery. The bookstore becomes a central spot in Paris's cultural life with many famous writers that visit the place, such as William Burroughs, Allen Ginsberg, Julio Cortázar, and Henry Miller if to mention a very few.



④ **11:30 - 12:00** Église Saint-Séverin, Paris

2 Rue des Prêtres Saint-Séverin, 75005 Paris, France

Continue your tour in the marvelous Latin Quarter, and stop at Église Saint Severin, an extraordinary 13th century Roman Catholic Church. The Church of Saint Severin serves the Parisian for centuries and is a peaceful and quiet place of worship. The interior of the church is lavish and with fetching stained glass windows. But it's the Saint Severin building that brings the church fame, due to its distinguished Gothic style that is very hard to miss.

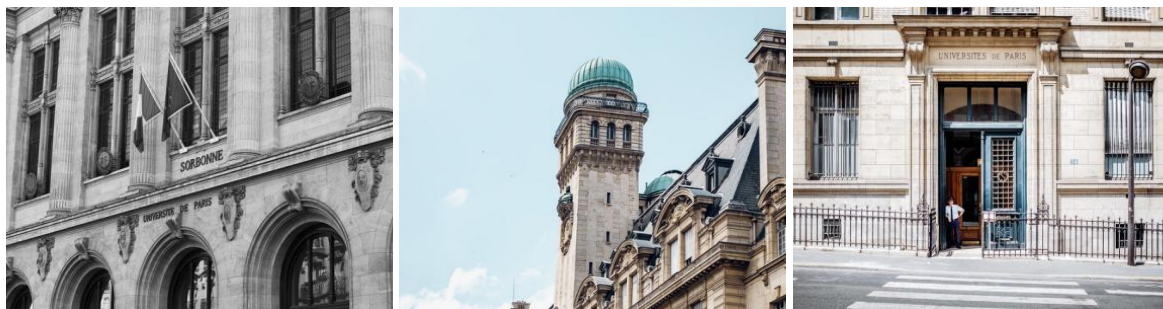


⑤ **12:00 - 13:00** Sorbonne, Paris

Sorbonne, 75005 Paris, France

La Sorbonne is a prominent university in France and one of the very firsts in the world. The beginning was very modest, the university was founded in 1253 by Robert de Sorbon, a

Theologian who established the College of Sorbonne. The College developed into a fine university and reputable and respectable research institution with more than 55,000 students. It is situated in the splendid Latin Quarter and since its roots reach up to the 13th century, the university has a very special character and wonderfully elegant architecture.



[Google Maps](#)

[Tickets](#)

[Nearby Hotels](#)

⑥ 13:00 - 14:30 Panthéon, Paris

Pl. du Panthéon, 75005 Paris, France

An exceptional neoclassical building, the Panthéon was formed as a church dedicated to Paris's guardian saint, Saint Geneviève. However, when the place constructions end, the place changed its original course due to the French Revolution and become the last resting place of outstanding and extraordinary French people. Among the notable people that are buried at the Panthéon you may find Victor Hugo, Voltaire, Jean-Jacques Rousseau, Marie and Pierre Curie and Emile Zola.



[Google Maps](#)[Tickets](#)[Nearby Hotels](#)

⑦ 14:30 - 16:00 Luxembourg Gardens, Paris

75006 Paris, France

Jardin du Luxembourg, spectacular gardens that are full of flowers, statues, lawns, and sitting areas. The enticing gardens were ordered by Queen Marie de Medici, widow of King Henry IV, in 1612, to surround Luxembourg Palace. Today, the gardens are open to all and the Palace becomes the house of the French Senate. It is a must-visit place in Paris and represents well the love of the French to nature, aesthetic and preserving the past.

[Google Maps](#)[Tickets](#)[Nearby Hotels](#)

⑧ 16:30 - 17:00 Église Saint-Sulpice, Paris

2 Rue Palatine, 75006 Paris, France

An impressive 17th century Roman Catholic Church and one of the largest in Paris. The place also received international fame

when the Church was mentioned in the bestseller book "The Da Vinci Code", by Dan Brown.



[Google Maps](#)

[Tickets](#)

[Nearby Hotels](#)

⑨ **17:30 - 18:00 Eggs&Co., Paris**

11 Rue Bernard Palissy, 75006 Paris, France

Take a short break from your travel day and stop at Eggs & Co. A cozy restaurant-café, with delectable meals and friendly staff. As the name suggests, Eggs & Co offers a variety of meals based on eggs, therefore it is not suitable for vegans. But if you love Eggs Benedict and a really good coffee, Eggs & Co is your place.



[Google Maps](#)

[Tickets](#)

[Nearby Hotels](#)

⑩ 18:00 - 19:00 Saint-Germain-des-Prés, Paris

Saint-Germain-des-Prés, 75006 Paris, France

Stroll around the Saint-Germain-des-Prés quarter which is full of wonderful Romanesque architecture and iconic places. The lovely neighborhood is covered with alluring galleries, charming passages, delicious pastries, and some of the great chocolate shops in Paris. Do not miss the marvelous Église Saint-Germain-des-Prés, Café de Flore and Musée Eugène Delacroix.



[Google Maps](#)

[Tickets](#)

[Nearby Hotels](#)

① **09:30 - 10:00 Saint-Eustache, Paris, Paris**

2 Imp. Saint-Eustache, 75001 Paris, France

L'église Saint-Eustache is a very popular 16th-century church, due to its unique architectural style and adorned chapel. Located in the 1st arrondissement of Paris, at Les Halles, Saint-Eustache has a very unique combination of styles. The exterior of the church is Gothic, however, the interior design is a blend of Renaissance and Classical styles. The reason for this unusual combination is that while the church was built in 1532, it underwent major changes around the mid-19th century. Another interesting fact about Saint-Eustache is its 8000 pipes organ which one of is the largest in whole France.



[Google Maps](#)

[Tickets](#)

[Nearby Hotels](#)

② **10:30 - 12:30 The Centre Pompidou, Paris**

Place Georges-Pompidou, 75004 Paris, France

Located on the 4th arrondissement near the Marais, Centre Pompidou contains a library and the extremely successful National Museum of Modern Art (Musée National d'Art Moderne).

The inside-out design of the complex is considered controversial but also gains plenty of fans and praise. The attached square, Place Georges Pompidou, is beloved by many and has become a gathering place for Parisians who enjoy music and art performances.



[Google Maps](#)

[Tickets](#)

[Nearby Hotels](#)

③ 13:00 - 13:30 Hôtel de Ville, Paris

Pl. de l'Hôtel de Ville, 75004 Paris, France

Situated in the 4th arrondissement on the right bank of the Seine, Paris city hall is another display of outstanding French architecture. The site, in its various incarnations, is the seat of the Paris City Council and serves the Parisians since the 14th century. The former Hôtel de Ville was burned during the Paris Commune days and the current palatial neo-renaissance building was constructed in the late 19th century.

The large public square in front of the city hall was originally named Place de Grève. In past days, it officiates as a central

gathering place and where executions were carried out. Since 1830 the name of the square has changed to Place de l'Hôtel de Ville and is frequently used for demonstrations by the locals.



[Google Maps](#)

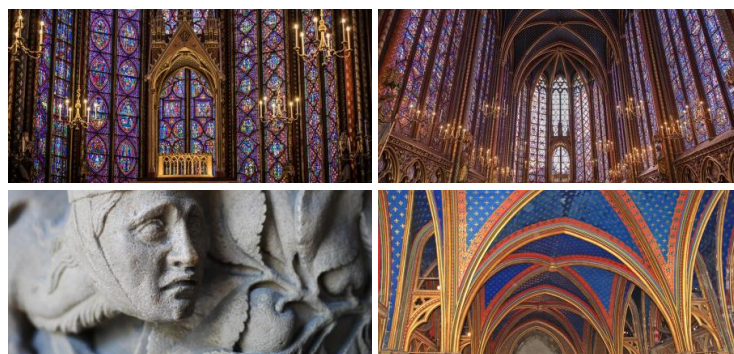
[Tickets](#)

[Nearby Hotels](#)

④ **13:30 - 14:30 Sainte-Chapelle, Paris**

10 Bd du Palais, 75001 Paris, France

Sainte-Chapelle is a fine example of a French medieval Gothic chapel. It was a royal chapel, part of Palais de la Cité which serves the kings of France until the 14th century. The small chapel has magnificent architecture and is world-famous for its stunning 13th-century stained glass windows. Those stained glass windows made Sainte-Chapelle a very popular place. Especially during the days when the sun is shining through and the church is lit by beautiful colors and leaves the visitors with an unforgettable experience.



[Google Maps](#)[Tickets](#)[Nearby Hotels](#)

⑤ **15:00 - 15:30 Pont Neuf, Paris**

75001 Paris, France

A historical monument in Paris, Pont Neuf is the oldest stone bridge across the River Seine that still exists today. Originally invited by Henri IV, the bridge was constructed, with some serious pauses, from 1578 to 1607. Magnificent during the day but even more at night, when the bridge arches are lighted up, Pont Neuf is another world-famous icon of Paris that you should not miss.

[Google Maps](#)[Tickets](#)[Nearby Hotels](#)

⑥ **16:00 - 17:00 Le Fumoir, Paris**

6 Rue de l'Amiral de Coligny, 75001 Paris, France

End your day at Le Fumoir, a restaurant-bar with a fantastic location, minutes from Pont Neuf and steps from the Louvre. The place offers a gastronomical celebration of flavors and dedicates to healthy food with Scandinavian influences. Seafood is also

served, and vegetarians will find respectable appetizing and mouthwatering options to order. The bar is lovely with delightful cocktails and courteous staff who will be happy to assist you to find the right drink for you.



[Google Maps](#)

[Tickets](#)

[Nearby Hotels](#)

① **09:00 - 09:30 Palais-Royal, Paris**

Palais-Royal, 75001 Paris, France

Palais-Royal as the name suggest used to be a royal palace. But except for the alluring building, the palace's courtyard attracts many locals and tourists due to the fetching and intriguing artwork of Daniel Buren, Les Deux Plateaux.



[Google Maps](#)

[Tickets](#)

[Nearby Hotels](#)

② **Studio-Théâtre de la Comédie-Française, Paris**

99 Rue de Rivoli Place de la Pyramide Inversée, 75001 Paris, France

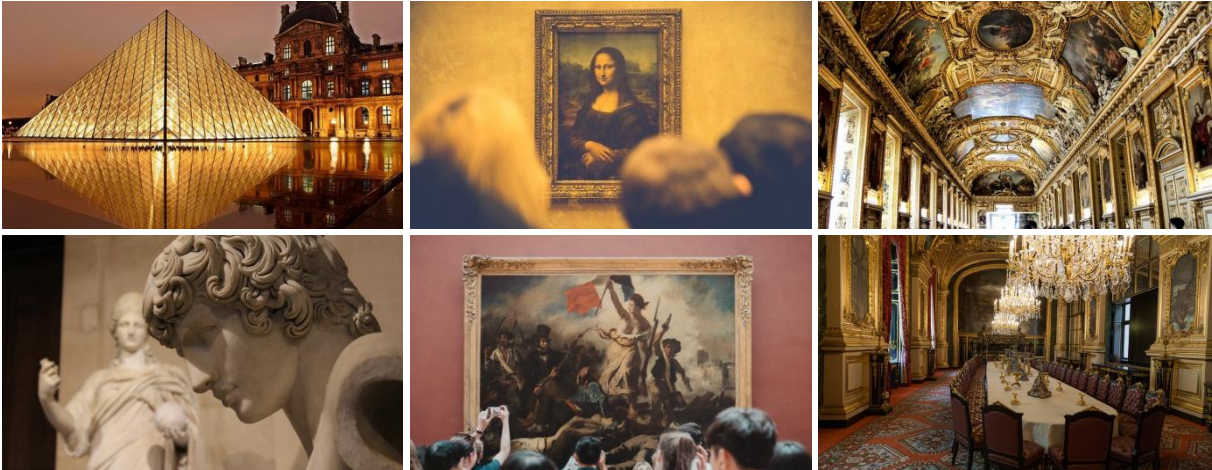
Comédie Française is one of France's national theaters. The theater is internationally known for its excellent and fantastic work which spans over centuries. The Comédie Française operates since 1680, and therefore it is the longest-running theater in the world.



③ 10:00 - 15:00 Louvre Museum, Paris

Rue de Rivoli, 75001 Paris, France

The Louvre Museum is considered one of the most prominent art museums in the world and maybe even the most important of them all. Without any doubt, this is the largest museum in the world and it won't be an exaggeration to say that the Louvre Museum is absolutely incredible. You can spend an entire day at the museum and still not be able to see it all. The museum has countless masterpiece artworks, including, of course, Leonardo da Vinci's Mona Lisa, probably the most known painting in the world. However, the Mona Lisa is far from being the only famous attraction of the Museum.



④ 15:30 - 16:00 Pont des Arts, Paris

Pont des Arts, 75006 Paris, France

Pont des Arts is a magnificent stone bridge that connects the two banks of the River Seine. The bridge gained world recognition when lovers from all over the world used to bind love locks with their names to the bridge. It is one of many proofs that Paris is the most romantic city in the world.



[Google Maps](#)

[Tickets](#)

[Nearby Hotels](#)

⑤ 16:30 - 18:00 Tuileries Garden, Paris

Pl. de la Concorde, 75001 Paris, France

Paris at Jardin des Tuileries is one of Paris's most entrancing gardens. The Garden was originally built as part of Queen Catherine de Medici's wish to build a palace in Paris. Thus, Tuileries Palace was constructed in 1564 and remained intact until it was later destroyed by fire in 1871 by the Paris Commune.

The grandiose garden receives its famous contour only a century after. When André Le Nôtre, the landscape architect who also design the exceptional Palace of Versailles's gardens, re-design the garden in 1664. Located in the 1st arrondissement of Paris

and near the Louvre, the majestic garden is abundant with green lawns, ponds, trees, flowers, and statues. Open to the public in 1667, the charming Tuileries Garden is locals' and tourists' favorite, and a great way to get acquainted with Paris.



[Google Maps](#)

[Tickets](#)

[Nearby Hotels](#)

① **10:00 - 11:00 Sacré-Cœur, Paris**

35 Rue du Chevalier de la Barre, 75018 Paris, France

The importance of Sacré-Cœur Basilica (Basilica of the Sacred Heart), is not only since it is a place of faith. Sacré-Cœur Basilica is located on Butte Montmartre, the second highest place in Paris after the Eiffel Tower. As such, the place provides an astonishing view of Paris. The Basilique du Sacré-Coeur de Montmartre is a Roman Catholic Church with a remarkable interior, organ, and mosaic, and Romano-Byzantine architectural style. Can be seen from afar due to its all-white color from the outside, Sacré-Cœur Basilica which was built in 1919, has also a crypt and a dome that provides a full panoramic view of the city.



[Google Maps](#)

[Tickets](#)

[Nearby Hotels](#)

② 11:00 - 11:30 Place du Tertre, Paris

Pl. du Tertre, 75018 Paris, France

Place du Tertre is a famous square in Paris, with wonderful history and vivid bohemian spirit. Place du Tertre was a magnet to many artists who worked and lived in Montmartre, particularly during the 18th and 19th centuries. Today, this artistic tradition of gathering in Place du Tertre still continues and you can find many artists in the square who sell their artworks. If you wish to find a talented painter for a portrait, Place du Tertre is the right place for you.



[Google Maps](#)

[Tickets](#)

[Nearby Hotels](#)

③ 11:30 - 12:30 Dalí Paris

11 Rue Poulbot, 75018 Paris, France

The incredible and phenomenal Spanish artist, Salvador Dalí, felt very much at home in Paris and spend much time in this spectacular city. The surrealist artist, who frequently exhibits his work in the City of Lights, was not forgotten by the Parisians. Dedicated to his brilliant work, Espace Salvador-Dalí has approximately 300 of his artworks, and the museum is the

perfect place for anyone who loves Salvador Dalí's art.



[Google Maps](#)

[Tickets](#)

[Nearby Hotels](#)

④ 12:30 - 13:00 Wall of Love, Paris

Square Jehan Rictus, Pl. des Abbesses, 75018 Paris, France

Located in the lovely garden of Jehan Rictus Square, Le mur des je t'aime (Wall of Love or I Love You Wall), is another reminder of Paris as the romantic city in the world. Created by Frédéric Baron and Claire Kito, on the wall is written in more than 250 different languages the phrase "I Love You".



[Google Maps](#)

[Tickets](#)

[Nearby Hotels](#)

⑤ **Abbesses, Paris**

22 Rue des Abbesses, 75018 Paris, France

Considered one of the most elegant Metro stations in Paris, Abbesses Metro Station has one of the very last Art Nouveau entrances in the city. Beautifully decorated in and out, the station was inaugurated in 1913 and since then serves as a fantastic example of Art Nouveau, to the joyous of Paris residents and tourists.



[Google Maps](#)

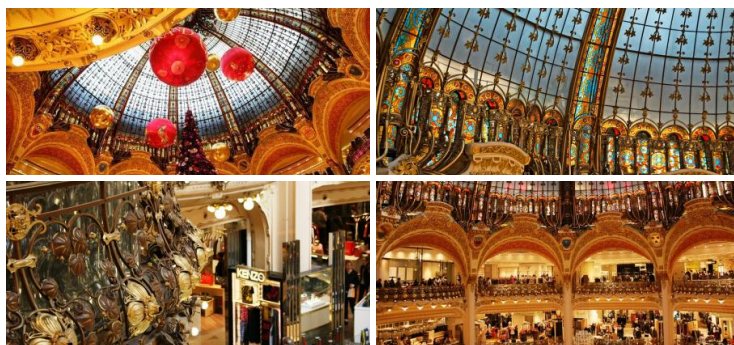
[Tickets](#)

[Nearby Hotels](#)

⑥ **14:00 - 15:00 Galeries Lafayette Haussmann, Paris**

40 Bd Haussmann, 75009 Paris, France

Galeries Lafayette is not only a department store in Paris, it is a symbol of luxury, fashion, and style for more than 120 years. With outstanding design, a spectacular colorful dome, and prestigious brands and products, Galeries Lafayette is a fantastic shopping experience.



[Google Maps](#)

[Tickets](#)

[Nearby Hotels](#)

**7 15:00 - 15:30 Yann Couvreur Galeries Lafayette
Gourmet, Paris**

35 Bd Haussmann, 75009 Paris, France

3,500 square meters of flavors celebration, Galeries Lafayette Gourmet is a must-see and try while in Paris. The two floors place offers spectacular and delicious gourmet food and some of the best desserts in whole France.



[Google Maps](#)

[Tickets](#)

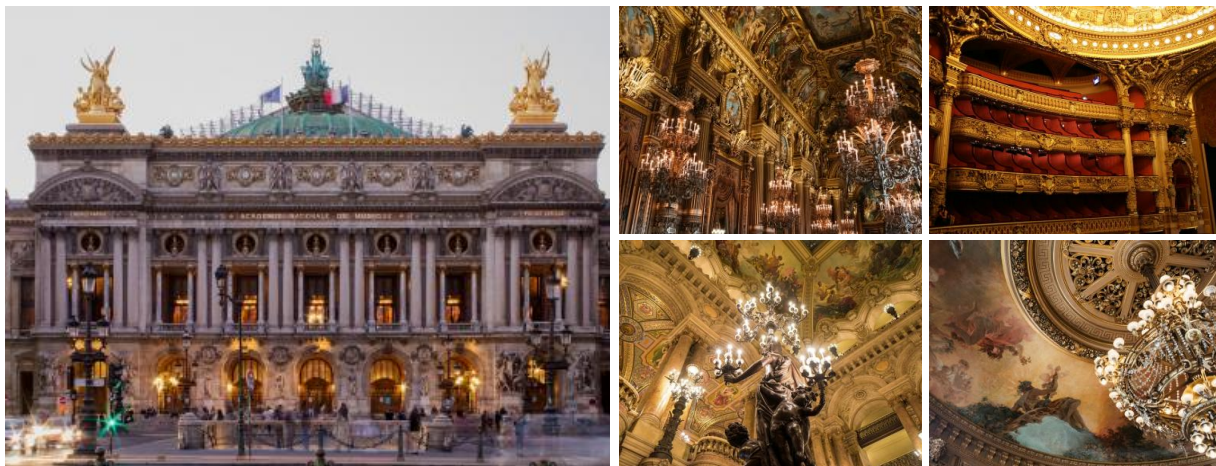
[Nearby Hotels](#)

8 15:30 - 17:00 Palais Garnier, Paris

Pl. de l'Opéra, 75009 Paris, France

A stunning opera house, that serves as a home to Opéra national de Paris. The grandiose building gracefully adds another dimension to the excellent opera productions that are held in Palais Garnier. The palatial Palais Garnier open its doors to the public in 1875 and is a central tourist attraction in Paris. The opera house's exterior is famous for its impressive façade with a

golden touch that is full of sculptures and symbols. The interior is also exceptional, with an outstanding foyer, grandiose staircase, and the Chagall painting on the main auditorium's ceiling. Even if you are not an opera fan, the place is defiantly worth a visit and a tour.



[Google Maps](#)

[Tickets](#)

[Nearby Hotels](#)

⑨ 17:30 - 18:00 Madeleine Church, Paris

75008 Paris, France

Église de la Madeleine is a Catholic church with very unique architecture. As not as other churches, Madeleine which was built from 1764 until 1842 in a Neo-Classical style, looks like a temple. Originally the church was supposed to adorn Napoleon's army, however, following his departure, the building converted into a church. The stately church is spacious, and the first thing you will notice is the high and imposing bronze doors. The church also has a large mosaic, nave, sculptures, and an organ from the middle of the 19th century.



[Google Maps](#)

[Tickets](#)

[Nearby Hotels](#)

⑩ 18:30 - 19:00 Place de la Concorde, Paris

75008 Paris, France

Place de la Concorde is a central square in Paris, famous for its beauty, striking obelisk, and winsome fountains. The square is approximately 19 acres and was creatively designed by Ange-Jacques Gabriel. Since 1836 the Square contains Luxor Obelisk, which was given as a gift from Egypt and is more than 3,000 years old. The magnificent fountains, Fontaine des Mers and Fontaine des Fleuves, were constructed in 1840, and since then they are a source of pride and joy for the Parisians. During the French Revolution, the square was witness to many noble and royal executions, including Louis XVI and Marie-Antoinette. Today, the square is one of Paris's beloved spots and attracts many tourists from all over the world.



[Google Maps](#)

[Tickets](#)

[Nearby Hotels](#)

① **08:30 - 09:30 Invalides, Paris**

75007 Paris, France

Go to Gare des Invalides Metro and RER station (or the nearest RER C station around your hotel). Make sure you arrive 15-20 minutes before departure so you will have enough time to buy tickets and find the platform. Take RER C (VICK or VITY trains) toward Versailles and get off at Versailles Château - Rive Gauche train station, it will take you about 40 minutes to get there.



[Google Maps](#)

[Tickets](#)

[Nearby Hotels](#)

② **09:30 - 10:00 Gare Rive Gauche, Versailles**

78000 Versailles, France

Versailles Château - Rive Gauche is the Palace of Versailles nearest train station. It takes about 10 minutes of walking to arrive at the Palace and gardens of Versailles. It is very easy to navigate your way to the Château since the way is paved with directions and the locals are also very friendly and helpful.

Leave the station and go to Avenue du Général de Gaulle, then

turn left to Avenue de Sceaux. Then again turn right at the Avenue and continue until you will arrive at Avenue Rockefeller. At Avenue Rockefeller, you will need to turn left when you'll see Avenue de Paris. Turn left at Avenue de Paris and continue at Rue de l'Indépendance Américaine until you'll see the Palace entrance.



[Google Maps](#)

[Tickets](#)

[Nearby Hotels](#)

③ **10:00 - 16:30** **Palace of Versailles, Versailles**

Place d'Armes, 78000 Versailles, France

World Heritage and symbol to hedonism, power, and royals fall, Château de Versailles and the surrounding gardens are a true wonder of beauty. The place played an important part in France's history and was home to royals for more than 100 years until the French Revolution start. This is the place where Louis XVI and his wife, Marie Antoinette, lived before they were forced to leave and later were executed by guillotine in 1793.

The Palace of Versailles is a remarkable place, which tells an important piece of France's history. An exquisite, elegant and engaging, the Palace of Versailles is evidence of the French

aesthetic, love of beauty, and nature. It is also a perfect ending to your trip in the captivating and irresistible City of Lights.



[Google Maps](#)

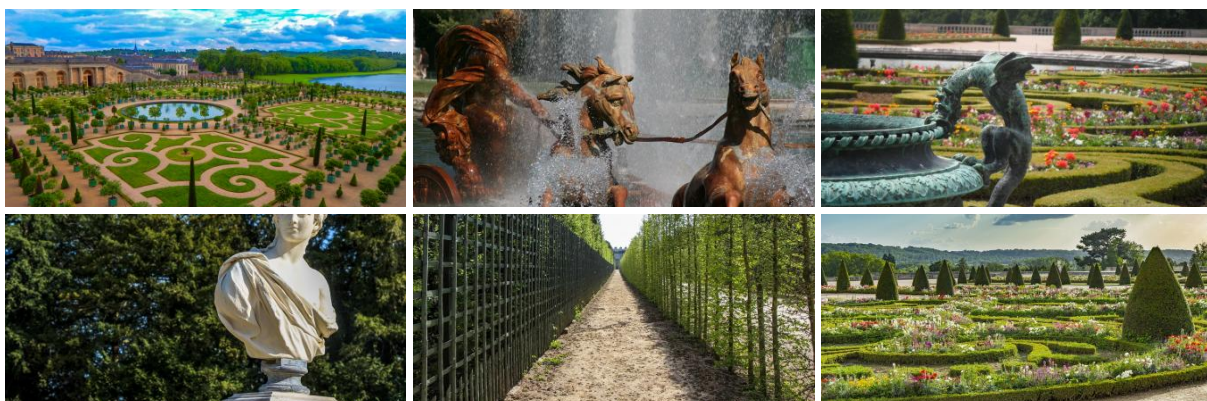
[Tickets](#)

[Nearby Hotels](#)

④ **Jardins du Château de Versailles, Versailles**

Pl. d'Armes, 78000 Versailles, France

The palace's gardens are absolutely stunning and rightfully gained their world fame. You can spend the entire day there, and it will still be hard to leave those delightful gardens. The gardens are full of impressive green lawns, trees, beautiful flowers, imposing statues, and incredible musical fountains. The royal gardens of Versailles are one of France's most beloved monuments and a memory for a lifetime, for every traveler.



⑤ **Park of Versailles, Versailles**

78000 Versailles, France

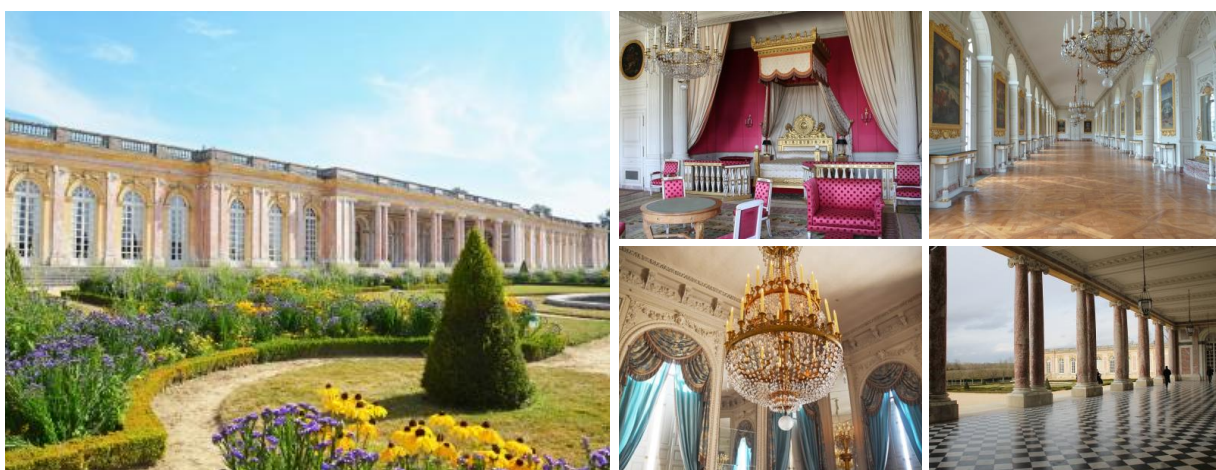
The Park of Versailles is monumental, spectacular, and enchanting. It is a direct continuation of the palace's amazing gardens. The large and wide park includes the Grand Canal and the Lake of the Swiss Guards and extends over 800 hectares, approximately. The view of the 1,670 meters long Grand Canal is incredible and amplifies the beauty of the Royal Palace. The Grand Canal was a complex engineering project and was designed by the famous landscape architect and king's Louis XIV head gardener, André Le Nôtre. The work on the Canal starts in 1668 and ends after 11 years, in 1679 and the outcome is grandiose and majestic. The Lake of the Swiss Guards is smaller, yet splendid. It took about 9 years, from 1679 until 1686 until the Lake receive its final shape. Surrounded by vegetation and green lawns, the Lake is fetching and another lovely spot at the fabulous Palace of Versailles.



⑥ **The Grand Trianon, Versailles**

Porte Saint-Antoine, 78000 Versailles, France

The wonderful Grand Trianon was constructed in 1687 and is very unique. It has a bold design and Italian-inspired architecture, it is covered with pink marble, has a black and white floor at the peristyle, and delightful gardens. Designed by the Jules Hardouin-Mansart, the palatial Grand Trianon was a place of escape for Louis XIV from the crowded Palace. It was also in use by Louis XV's wife, Marie Leszczyńska, during the summers. Another important residence of the Grand Trianon was Napoleon, who stayed there when he could. The interior is as well imposing, with fully furnished state apartments, private chambers, and the Cotelle Gallery which has 24 paintings, most of them by Jean Cotelle.



7 Marie-Antoinette's Estate, Versailles

78008 Versailles, France

Marie-Antoinette's Estate consists of the Petit Trianon, the English Gardens, and the Queen's hamlet. The Petit Trianon was originally ordered by King Louis XV in 1758. It took more than 10 years to build the winsome new palace that was ready for use in 1768. Following the death of Louis XV in 1774, and the beginning of Louis XVI's regime, the Petit Trianon was given to Queen Marie-Antoinette by her king-husband, and it became her favorite residence. The Queen closely supervised the design of the exceptional nearby English Gardens and the creation of the splendid Queen's hamlet which was established on a bank of a lake. While damaged during the French Revolution, it was Napoleon who wish and succeed to restore the palace and its gardens to the original design during Marie-Antoinette's days.

Today, dedicated to her memory of one of the most known royals in French history, Marie-Antoinette's Estate is the last stop in an entrancing journey in breathtaking Paris. A majestic ending of an unforgettable trip in the City of Lights and love, a place where everyone should visit, at least once in their lifetime.



[Google Maps](#)

[Tickets](#)

[Nearby Hotels](#)