

## Batobus Itinerary: Seine River Cruise and Paris sightseeing

Wednesday, 20-Jul-2022 - Thursday, 21-Jul-2022



Paris is so versatile that there are endless things to see and plenty of wonderful ways to explore the exciting City of Lights. One of the most charming ways to discover the capital of romance is by using the Batobus. The Batobus is a shuttle along the Seine with 9 stops at strategic hotspots in the city. You may buy a pass for one or two days to the Batobus, and this will allow you to board the shuttle as much as you wish, from 10:00 to 19:00.

The Batobus provide you with a magnificent view of the city landmarks, splendor, and spectacular architecture, from an unusual angle. The shuttle is open, with glass windows, and offers a lovely river cruise together with the ability to visit many of the city's attractions.

This itinerary gives you the opportunity to reveal the city in an unforgettable way and exhibit the most iconic landmarks along the Batobus route. Also, with the provided map, you can easily navigate your way from Paris' main attractions to the Batobus stops.

Bon voyage!

# Trip Summary

## Day 1 - Wednesday, 20-Jul-2022

- ① Champ de Mars, Paris [Google Maps](#)
- ② Eiffel Tower, Paris [Google Maps](#)
- ③ Batobus Tour Eiffel, Paris [Google Maps](#)
- ④ Batobus - Invalides, Paris [Google Maps](#)
- ⑤ Les Invalides, Paris [Google Maps](#)
- ⑥ Batobus - Invalides, Paris [Google Maps](#)
- ⑦ Batobus - Musée d'Orsay, Paris [Google Maps](#)
- ⑧ Musee D'Orsay, Paris [Google Maps](#)
- ⑨ Batobus - Musée d'Orsay, Paris [Google Maps](#)
- ⑩ Batobus - Saint-Germain-des-Prés, Paris [Google Maps](#)
- ⑪ Saint-Germain-des-Prés, Paris [Google Maps](#)
- ⑫ Église Saint-Sulpice, Paris [Google Maps](#)
- ⑬ Luxembourg Gardens, Paris [Google Maps](#)
- ⑭ Panthéon, Paris [Google Maps](#)
- ⑮ Sorbonne, Paris [Google Maps](#)
- ⑯ Shakespeare and Company, Paris [Google Maps](#)

- 17 Notre Dame, Paris [Google Maps](#)
- 18 Batobus - Notre-Dame, Paris [Google Maps](#)

## Day 2 - Thursday, 21-Jul-2022

- 1 Batobus - Jardin des Plantes, Paris [Google Maps](#)
- 2 Batobus - Hotel De Ville, Paris [Google Maps](#)
- 3 Hôtel de Ville, Paris [Google Maps](#)
- 4 Sainte-Chapelle, Paris [Google Maps](#)
- 5 Pont Neuf, Paris [Google Maps](#)
- 6 Pont des Arts, Paris [Google Maps](#)
- 7 Louvre Museum, Paris [Google Maps](#)
- 8 Batobus - Louvre, Paris [Google Maps](#)
- 9 Batobus - Champs-Élysées, Paris [Google Maps](#)
- 10 Pont Alexandre III, Paris [Google Maps](#)
- 11 Grand Palais, Paris [Google Maps](#)
- 12 Petit Palais, Paris [Google Maps](#)
- 13 Place de la Concorde, Paris [Google Maps](#)
- 14 Champs-Élysées, Paris [Google Maps](#)

15

## Arc de Triomphe, Paris

[Google Maps](#)

## ① **Champ de Mars, Paris**

2 All. Adrienne Lecouvreur, 75007 Paris, France

From Eiffel Tower to École Militaire, Champ de Mars is a magnificently designed urban green lung in Paris. As a central and large open space, Champ de Mars was chosen as the location for part of the French Revolution's celebrations and hosts the Expositions Universelles, Paris's famous World's Fairs. The place, which was open in 1780, is always bustling, full of Parisians and tourists who wish to enjoy the green lawns and superb view of the Eiffel Tower. It is an ideal place to absorb Paris's vibrant atmosphere, have a picnic, or just wander around in one of Paris's best areas.



[Google Maps](#)

[Tickets](#)

[Nearby Hotels](#)

## ② **Eiffel Tower, Paris**

Champ de Mars, 5 Av. Anatole France, 75007 Paris, France

La tour Eiffel is more than just a landmark, it's Paris itself. Monumental, full of charm, elegant, romantic, and with outstanding architecture. Built by Gustave Eiffel's company and

named after him, the tower was inaugurated in 1889 for Paris World's Fair, Exposition Universelle. The tower was built to mark and honor the 100th year of the end of the French Revolution. While the beginning was controversial, Eiffel Tower becomes one of the most famous and visited monuments in the world. The Eiffel Tower is hypnotizing, it's catching the eye and has a mesmerizing view from above. Therefore, it is most recommended to visit the 2nd and 3rd floors of the tower, to see a breathtaking view of Paris, especially after dark.



[Google Maps](#)

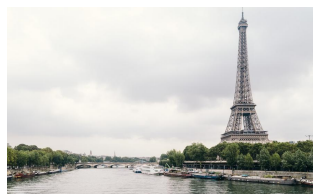
[Tickets](#)

[Nearby Hotels](#)

### ③ **Batobus Tour Eiffel, Paris**

Port de la Bourdonnais, 75007 Paris, France

After visiting the remarkable Tour Eiffel and the surrounding, go to the Batobus Tour Eiffel stop and travel along the Seine to your next destination.



[Google Maps](#)[Tickets](#)[Nearby Hotels](#)

---

#### ④ **Batobus - Invalides, Paris**

Quai d'Orsay, 75007 Paris, France

The Invalides Batobus stop provides you with access to the nearby iconic Les Invalides. After ending your tour, you will easily be able to return to the Batobus and sail on.

[Google Maps](#)[Tickets](#)[Nearby Hotels](#)

---

#### ⑤ **Les Invalides, Paris**

129 Rue de Grenelle, 75007 Paris, France

Les Invalides is a beautifully designed 17th-century complex and landmark in Paris you should not miss. Originally, it serves war veterans and includes a hospital. Today the imposing place is mostly known for Dôme des Invalides, a royal church with a winsome golden dome that serves as Napoleon's last resting place. The place also contains Musée de l'Armée, Musée de l'Ordre de la Libération, and Musée des Plans-Reliefs, all related to France's military history.





[Google Maps](#)

[Tickets](#)

[Nearby Hotels](#)

## ⑥ **Batobus - Invalides, Paris**

Quai d'Orsay, 75007 Paris, France

The Invalides Batobus stop provides you with access to the nearby iconic Les Invalides. After ending your tour, you will easily be able to return to the Batobus and sail on.



[Google Maps](#)

[Tickets](#)

[Nearby Hotels](#)

## ⑦ **Batobus - Musée d'Orsay, Paris**

Musee D'Orsay, 9 Pl. Henry de Montherlant, 75007 Paris, France

Take off at Batobus - Musée d'Orsay. View Paris' wonders, and especially the magnificent Musée d'Orsay. Then return, and

enjoy and absorb Paris's beauty while sailing at the Seine to your next destination.



[Google Maps](#)

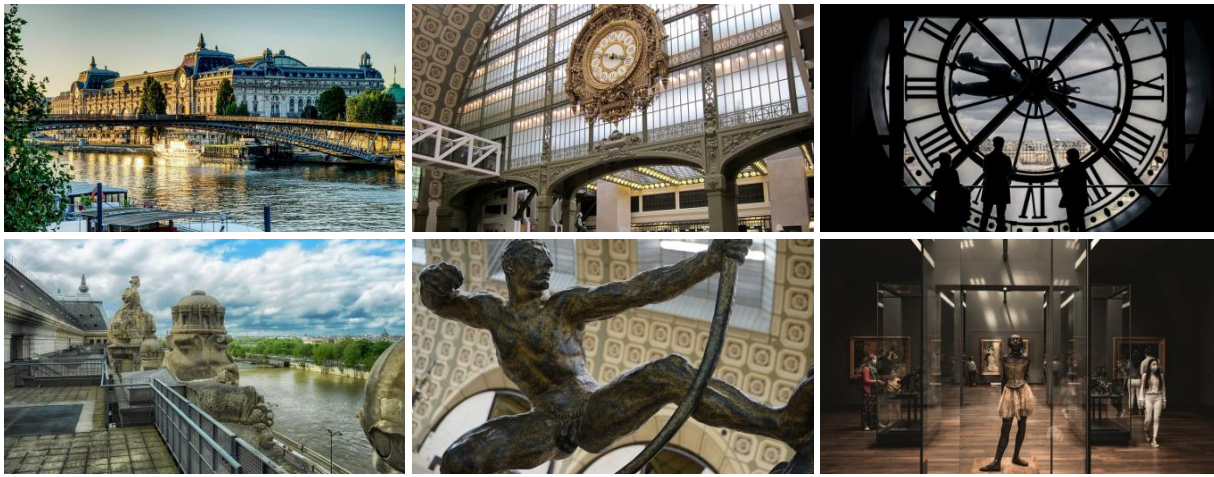
[Tickets](#)

[Nearby Hotels](#)

## ⑧ **Musee D'Orsay, Paris**

Musee D'Orsay, 75007 Paris, France

Part of the D'Orsay Museum's charm is the building, which used to be a railway station (Gare d'Orsay). The remarkable building itself looks like artwork and is a splendid decoration to the masterpiece this museum contains. And like some of the iconic landmarks in Paris, the Musee D'Orsay building, then Gare d'Orsay, was ready just in time for the 1900 Paris Exposition (Exposition Universelle). The lovely museum located on the bank of the river Seine has many wonderful French artworks from the middle of the 19th century to the beginning of the 20th century. D'Orsay Museum also exhibits a fantastic collection of Impressionist and post-Impressionist paintings. Gauguin, Cézanne, Renoir, Manet, Degas, Monet, and Van Gogh if to name a few, are among the remarkable artist this museum display their masterpieces.



[Google Maps](#)

[Tickets](#)

[Nearby Hotels](#)

## ⑨ **Batobus - Musée d'Orsay, Paris**

Musee D'Orsay, 9 Pl. Henry de Montherlant, 75007 Paris, France

Take off at Batobus - Musée d'Orsay. View Paris' wonders, and especially the magnificent Musée d'Orsay. Then return, and enjoy and absorb Paris's beauty while sailing at the Seine to your next destination.



[Google Maps](#)

[Tickets](#)

[Nearby Hotels](#)

## ⑩ **Batobus - Saint-Germain-des-Prés, Paris**

3 Quai Malaquais, 75006 Paris, France

Take off at Batobus - Saint-Germain-des-Prés stop, to visit one of Paris's most charming and enticing quarters.



[Google Maps](#)

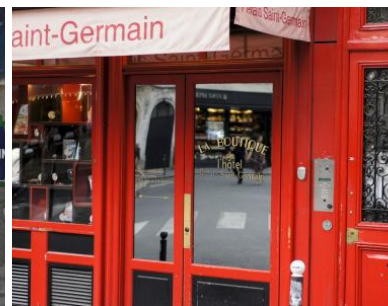
[Tickets](#)

[Nearby Hotels](#)

## ⑪ **Saint-Germain-des-Prés, Paris**

Saint-Germain-des-Prés, 75006 Paris, France

Stroll around the Saint-Germain-des-Prés quarter which is full of wonderful Romanesque architecture and iconic places. The lovely neighborhood is covered with alluring galleries, charming passages, delicious pastries, and some of the great chocolate shops in Paris. Do not miss the marvelous Église Saint-Germain-des-Prés, Café de Flore and Musée Eugène Delacroix.



[Google Maps](#)

[Tickets](#)

[Nearby Hotels](#)

## 12 Église Saint-Sulpice, Paris

2 Rue Palatine, 75006 Paris, France

An impressive 17th century Roman Catholic Church and one of the largest in Paris. The place also received international fame when the Church was mentioned in the bestseller book "The Da Vinci Code", by Dan Brown.



[Google Maps](#)

[Tickets](#)

[Nearby Hotels](#)

## 13 Luxembourg Gardens, Paris

75006 Paris, France

Jardin du Luxembourg, spectacular gardens that are full of flowers, statues, lawns, and sitting areas. The enticing gardens were ordered by Queen Marie de Medici, widow of King Henry IV, in 1612, to surround Luxembourg Palace. Today, the gardens are open to all and the Palace becomes the house of the French Senate. It is a must-visit place in Paris and represents well the love of the French to nature, aesthetic and preserving the past.



## 14 **Panthéon, Paris**

Pl. du Panthéon, 75005 Paris, France

An exceptional neoclassical building, the Panthéon was formed as a church dedicated to Paris's guardian saint, Saint Geneviève. However, when the place constructions end, the place changed its original course due to the French Revolution and become the last resting place of outstanding and extraordinary French people. Among the notable people that are buried at the Panthéon you may find Victor Hugo, Voltaire, Jean-Jacques Rousseau, Marie and Pierre Curie and Emile Zola.

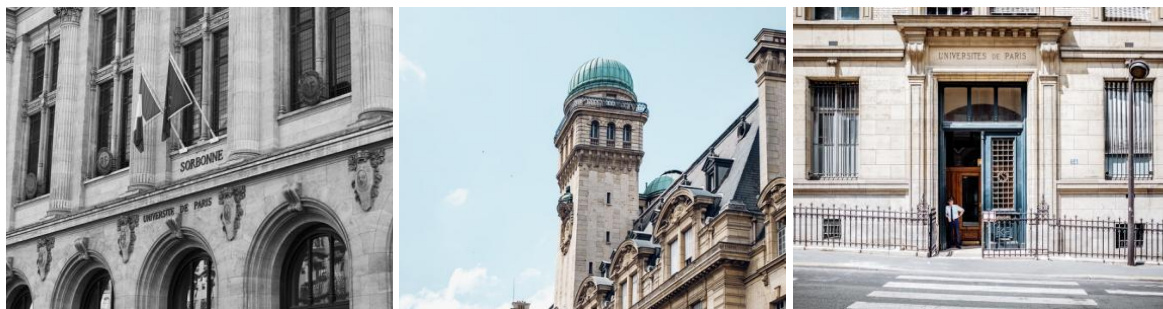


## 15 **Sorbonne, Paris**

Sorbonne, 75005 Paris, France

La Sorbonne is a prominent university in France and one of the very firsts in the world. The beginning was very modest, the university was founded in 1253 by Robert de Sorbon, a

Theologian who established the College of Sorbonne. The College developed into a fine university and reputable and respectable research institution with more than 55,000 students. It is situated in the splendid Latin Quarter and since its roots reach up to the 13th century, the university has a very special character and wonderfully elegant architecture.



[Google Maps](#)

[Tickets](#)

[Nearby Hotels](#)

## 16 Shakespeare and Company, Paris

37 Rue de la Bûcherie, 75005 Paris, France

Magnificent English bookstore with a rich history and enchanting bohemian atmosphere. The store is located near Notre Dame Cathedral and was opened by the American George Whitman in 1951 in a 17th-century building that used to be a monastery. The bookstore becomes a central spot in Paris's cultural life with many famous writers that visit the place, such as William Burroughs, Allen Ginsberg, Julio Cortázar, and Henry Miller if to mention a very few.



## 17 Notre Dame, Paris

Notre Dame, Paris, France

Notre-Dame de Paris is a Gothic Catholic cathedral church and one of the most famous icons of Paris and faith. The Cathedral was built during the middle-ages and has a very long history which entwined with Paris history. It became an icon, also thanks to brilliant Victor Hugo's "The Hunchback of Notre-Dame" which excites the imagination of readers since 1831. Unfortunately, the place burned in April 2019 and is undergoing a massive reconstruction. Despite this, the Cathedral and its surrounding are still very much worth watching.





## 18 Batobus - Notre-Dame, Paris

21 Quai de Montebello, 75005 Paris, France

End your journey at the Notre Dame area, then return to the Batobus - Notre-Dame shuttle, and sail on to wherever you wish to go.



[Google Maps](#)

[Tickets](#)

[Nearby Hotels](#)

① **Batobus - Jardin des Plantes, Paris**

Quai Saint-Bernard, 75005 Paris, France

Take a short ride on the Seine, and see more of thrilling Paris and the city's incredible architecture, from a different angle.



[Google Maps](#)

[Tickets](#)

[Nearby Hotels](#)

② **Batobus - Hotel De Ville, Paris**

34 Voie Georges Pompidou, 75004 Paris, France

Take off at Batobus - Hotel De Ville and get prepared for a wonderful experience of visiting the remarkable Hôtel de Ville and its marvelous surrounding.



[Google Maps](#)

[Tickets](#)

[Nearby Hotels](#)

### ③ Hôtel de Ville, Paris

Pl. de l'Hôtel de Ville, 75004 Paris, France

Situated in the 4th arrondissement on the right bank of the Seine, Paris city hall is another display of outstanding French architecture. The site, in its various incarnations, is the seat of the Paris City Council and serves the Parisians since the 14th century. The former Hôtel de Ville was burned during the Paris Commune days and the current palatial neo-renaissance building was constructed in the late 19th century.

The large public square in front of the city hall was originally named Place de Grève. In past days, it officiates as a central gathering place and where executions were carried out. Since 1830 the name of the square has changed to Place de l'Hôtel de Ville and is frequently used for demonstrations by the locals.



[Google Maps](#)

[Tickets](#)

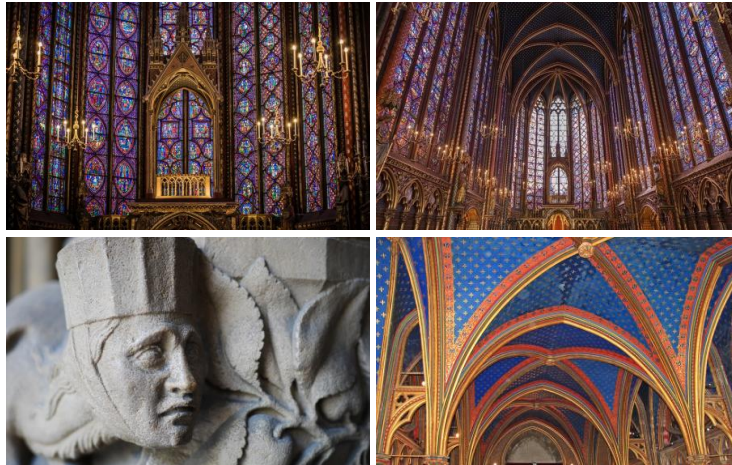
[Nearby Hotels](#)

### ④ Sainte-Chapelle, Paris

10 Bd du Palais, 75001 Paris, France

Sainte-Chapelle is a fine example of a French medieval Gothic chapel. It was a royal chapel, part of Palais de la Cité which serves the kings of France until the 14th century. The small

chapel has magnificent architecture and is world-famous for its stunning 13th-century stained glass windows. Those stained glass windows made Sainte-Chapelle a very popular place. Especially during the days when the sun is shining through and the church is lit by beautiful colors and leaves the visitors with an unforgettable experience.



[Google Maps](#)

[Tickets](#)

[Nearby Hotels](#)

---

## ⑤ Pont Neuf, Paris

75001 Paris, France

A historical monument in Paris, Pont Neuf is the oldest stone bridge across the River Seine that still exists today. Originally invited by Henri IV, the bridge was constructed, with some serious pauses, from 1578 to 1607. Magnificent during the day but even more at night, when the bridge arches are lighted up, Pont Neuf is another world-famous icon of Paris that you should not miss.



[Google Maps](#)

[Tickets](#)

[Nearby Hotels](#)

## ⑥ Pont des Arts, Paris

Pont des Arts, 75006 Paris, France

Pont des Arts is a magnificent stone bridge that connects the two banks of the River Seine. The bridge gained world recognition when lovers from all over the world used to bind love locks with their names to the bridge. It is one of many proofs that Paris is the most romantic city in the world.



[Google Maps](#)

[Tickets](#)

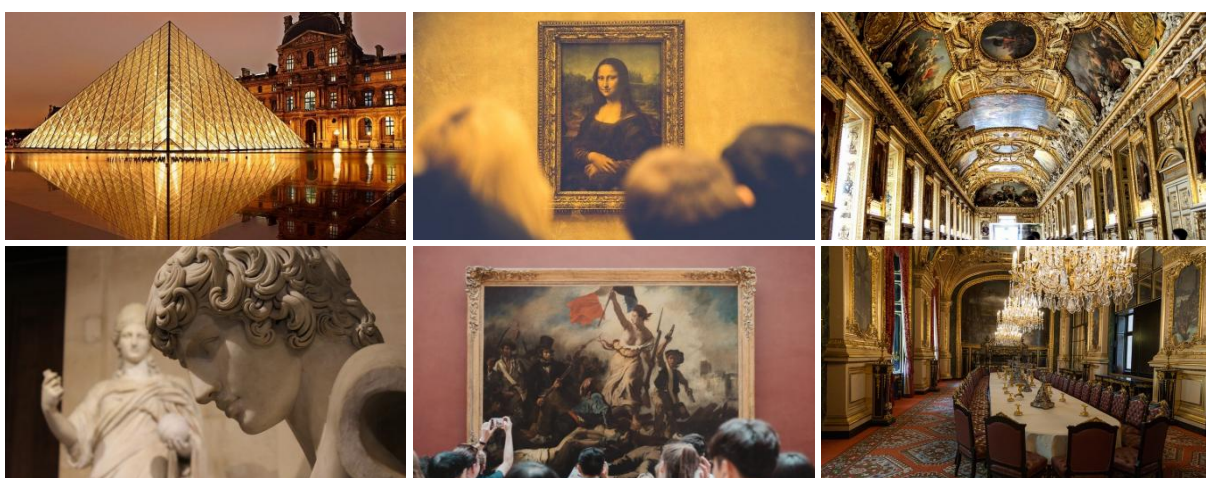
[Nearby Hotels](#)

## ⑦ Louvre Museum, Paris

Rue de Rivoli, 75001 Paris, France

The Louvre Museum is considered one of the most prominent art museums in the world and maybe even the most important of

them all. Without any doubt, this is the largest museum in the world and it won't be an exaggeration to say that the Louvre Museum is absolutely incredible. You can spend an entire day at the museum and still not be able to see it all. The museum has countless masterpiece artworks, including, of course, Leonardo da Vinci's Mona Lisa, probably the most known painting in the world. However, the Mona Lisa is far from being the only famous attraction of the Museum.



[Google Maps](#)

[Tickets](#)

[Nearby Hotels](#)

## ⑧ **Batobus - Louvre, Paris**

Quai du Louvre, 75001 Paris, France

Go on to the Batobus - Louvre stop, sail and view the spectacular urban landscape of Paris from a different angle.



[Google Maps](#)

[Tickets](#)

[Nearby Hotels](#)

---

## ⑨ **Batobus - Champs-Élysées, Paris**

Port des Champs-Élysées, 75008 Paris, France

Take off at the Batobus - Champs-Élysées stop and navigate your way among some of the most beautiful treasures of Paris.



[Google Maps](#)

[Tickets](#)

[Nearby Hotels](#)

---

## ⑩ **Pont Alexandre III, Paris**

Pont Alexandre III, 75008 Paris, France

Pont Alexandre III is one of Paris's iconic landmarks and maybe the most gorgeous bridge in the city. As nearby Grand Palais and Petit Palais, Pont Alexandre III was built for 1900 Exposition Universelle (Universal Exposition). Impressive sculptures with touches of gold are scattered along the bridge together with splendid Art Nouveau lamps. Pont Alexandre III's central location, and the view of some of Paris's architectural wonders when you cross it, make this bridge a must-see.



[Google Maps](#)

[Tickets](#)

[Nearby Hotels](#)

## ⑪ Grand Palais, Paris

3 Av. du Général Eisenhower, 75008 Paris, France

Just like the Petit Palais, the Grand Palais was built for the 1900 Exposition Universelle (Universal Exposition). The building which has a captivating dome made of glass consists of Nave, National Galleries, and Palais de la Découverte. The National Galleries exhibit fantastic exhibitions, and Palais de la Découverte is used as a science museum. During the years, Grand Palais serves France and the Parisians in main national and international events belonging to the art and education realms. Grand Palais shows, once again and without doubt, French architecture and arts excellence.



[Google Maps](#)

[Tickets](#)

[Nearby Hotels](#)



## 12 Petit Palais, Paris

Av. Winston Churchill, 75008 Paris, France

Wonderful building with enchanting architecture that was built for 1900 Exposition Universelle (Universal Exposition). Today, the place is home to Musée des Beaux-Arts de la Ville de Paris, which has a fantastic collection of notable French and other European artists' artworks. The Petit Palais is located near to the Grand Palais, which together provides another glimpse of the alluring French architecture.



[Google Maps](#)

[Tickets](#)

[Nearby Hotels](#)

## 13 Place de la Concorde, Paris

75008 Paris, France

Place de la Concorde is a central square in Paris, famous for its beauty, striking obelisk, and winsome fountains. The square is approximately 19 acres and was creatively designed by Ange-Jacques Gabriel. Since 1836 the Square contains Luxor Obelisk, which was given as a gift from Egypt and is more than 3,000 years old. The magnificent fountains, Fontaine des Mers and Fontaine des Fleuves, were constructed in 1840, and since then

they are a source of pride and joy for the Parisians. During the French Revolution, the square was witness to many noble and royal executions, including Louis XVI and Marie-Antoinette. Today, the square is one of Paris's beloved spots and attracts many tourists from all over the world.



[Google Maps](#)

[Tickets](#)

[Nearby Hotels](#)

## ⑭ Champs-Élysées, Paris

Champs-Élysées, Paris, France

A world-famous avenue, synonym to luxury, splendor, fashion, and opulence. The 1.9 kilometers splendid avenue is full of grandiose stores, beautiful gardens, and fancy restaurants and cafes.



## 15 Arc de Triomphe, Paris

Pl. Charles de Gaulle, 75008 Paris, France

Arc de Triomphe is one of France's most notable symbols. It is located in Place Charles de Gaulle and is connected to the famous avenue, Champs-Élysées. Designed by Jean-François Chalgrin and inaugurated in 1836, Arc de Triomphe is approximately 50-meter high, 22 meters wide, and about 45 meters long. The impressive arc was established to respect the fallen French soldiers. Those who died during the Revolution, Napoleonic Wars, and those who fought for the country during those turbulent times. Every day, at 18:30, you will be able to see the flame of remembrance, as a tribute of the French nation in honor of its fallen soldiers.

