

5 Days in London, United Kingdom

Monday, 10-Feb-2025 - Friday, 14-Feb-2025



London is an incredible city with a remarkable number of exciting attractions and fascinating landmarks to view. The city is breathtaking, stunning at every level, and rightfully should be on every traveler's bucket list. It offers endless of opportunities for all, from young to old, to enjoy and explore. As a top travel destination with millions of tourists every season, you will always find something thrilling to do in London.

The city offers fantastic museums, many are completely free. As one of the world's most influential cultural centers, London provides Incomparable musicals, theater shows, and music concerts. The cruises over the River Thames and splendid Little Venice will also brighten your day. The shopping experience, colorful markets, and excellent culinary scene in London are nothing but outstanding. The classic pubs together with unbeatable nightlife are an absolute joy too. With one very

famous royal family, majestic architecture, extraordinary history, and winsome parks, London is a must-visit place.

This itinerary will help you to save time and navigate among the overwhelming number of attractions in England's capital, with information, tips, and maps. Use Trip.Expert's trip planner and personalize your trip, buy tickets in advance, make hotel reservations and get ready to start your dream vacation in one of the most marvelous cities in the world.

Trip Summary

Day 1 - Monday, 10-Feb-2025

- | | | | |
|---|-------|-------------------------------|-----------------------------|
| ① | 09:30 | St James's Park, London | Google Maps |
| ② | 10:30 | Buckingham Palace, London | Google Maps |
| ③ | 12:00 | Westminster Abbey, London | Google Maps |
| ④ | 13:30 | Palace of Westminster, London | Google Maps |
| ⑤ | | Big Ben, London | Google Maps |
| ⑥ | 15:00 | London Eye, London | Google Maps |
| ⑦ | 16:00 | Covent Garden, London | Google Maps |

Day 2 - Tuesday, 11-Feb-2025

- | | | | |
|---|-------|------------------------------|-----------------------------|
| ① | 09:30 | Soho, London | Google Maps |
| ② | 11:00 | Piccadilly Circus, London | Google Maps |
| ③ | 12:30 | Trafalgar Square, London | Google Maps |
| ④ | 13:30 | The National Gallery, London | Google Maps |
| ⑤ | 16:00 | Leicester Square, London | Google Maps |
| ⑥ | 17:00 | West End, London | Google Maps |

Day 3 - Wednesday, 12-Feb-2025

- | | | | |
|---|-------|------------------------------------|-----------------------------|
| ① | 10:00 | Victoria and Albert Museum, London | Google Maps |
| ② | 12:30 | Hyde Park, London | Google Maps |
| ③ | 14:00 | Kensington Gardens, London | Google Maps |
| ④ | 14:30 | Kensington Palace, London | Google Maps |
| ⑤ | 17:00 | Portobello Road Market, London | Google Maps |
| ⑥ | 18:00 | Notting Hill, London | Google Maps |

Day 4 - Thursday, 13-Feb-2025

- | | | | |
|---|-------|------------------------------------|-----------------------------|
| ① | 09:30 | Little Venice, London | Google Maps |
| ② | 11:30 | Madame Tussauds, London | Google Maps |
| ③ | 13:30 | The Sherlock Holmes Museum, London | Google Maps |
| ④ | 15:00 | The Regent's Park, London | Google Maps |
| ⑤ | 17:00 | Camden Market, London | Google Maps |
| ⑥ | 18:00 | Camden Town, London | Google Maps |

Day 5 - Friday, 14-Feb-2025

- | | | | |
|---|-------|----------------------|-----------------------------|
| ① | 09:00 | Tower Bridge, London | Google Maps |
|---|-------|----------------------|-----------------------------|

- | | | | |
|---|-------|---------------------------------|-----------------------------|
| ② | 09:30 | Tower of London | Google Maps |
| ③ | 11:00 | The View from The Shard, London | Google Maps |
| ④ | 12:00 | Borough Market, London | Google Maps |
| ⑤ | 13:30 | Shakespeare's Globe, London | Google Maps |
| ⑥ | 15:00 | Tate Modern, London | Google Maps |
| ⑦ | 17:00 | St. Paul's Cathedral, London | Google Maps |

① 09:30 - 10:30 St James's Park, London

London SW1A 2BJ, UK

St James's Park is one of London's oldest and most beautiful royal parks, situated near Buckingham Palace. It's famous for its serene lake, home to various bird species including swans, and its stunning views of the palace and the London Eye. The park offers a peaceful retreat in the heart of the city, making it an ideal spot for a leisurely stroll, a picnic, or simply to unwind and enjoy the scenic beauty.



[Google Maps](#)

[Tickets](#)

[Nearby Hotels](#)

② 10:30 - 11:30 Buckingham Palace, London

Westminster, London SW1A 1AA, UK

Buckingham Palace is the official residence of the British monarch in London. It's famous for the Changing of the Guard ceremony, an iconic display of British pageantry. The palace's splendid architecture and the beautiful Victoria Memorial in front

of it make it a must-visit attraction. While tourists can't go inside the main building, the Changing of the Guard event and the exterior view of the palace are emblematic of British royalty and heritage.



[Google Maps](#)

[Tickets](#)

[Nearby Hotels](#)

③ 12:00 - 13:30 Westminster Abbey, London

Westminster Abbey, London SW1P 3PA, UK

Westminster Abbey is a historic church known for its remarkable Gothic architecture and its role as the traditional venue for coronations, royal weddings, and state funerals. It's famous for the Poets' Corner, where many literary legends are buried or commemorated. The abbey's interior showcases intricate stained glass windows and impressive medieval craftsmanship. Visitors can explore the abbey to learn about England's history, its monarchs, and notable figures buried within its walls.



④ **13:30 - 14:00 Palace of Westminster, London**

London SW1A 0AA, UK

The Palace of Westminster, also known as the Houses of Parliament, is a symbol of British democracy. This iconic Gothic-style building on the River Thames houses the UK Parliament. It's famous for Big Ben, the Great Bell housed in the Elizabeth Tower. Visitors can attend debates, explore historic chambers, and marvel at the stunning architecture, making it a hub of political and architectural significance in London.



⑤ **Big Ben, London**

Westminster, London SW1A 0AA, UK

Big Ben, officially known as the Elizabeth Tower, is an iconic symbol of London and the UK. Located at the north end of the

Palace of Westminster, it houses the Great Bell, which chimes the famous "Big Ben" sound. Its stunning Gothic architecture and historical significance make it a must-visit. While it's not open to the public, its exterior and the surrounding Westminster area offer great photo opportunities and a sense of the city's rich heritage.



[Google Maps](#)

[Tickets](#)

[Nearby Hotels](#)

⑥ 15:00 - 15:30 London Eye, London

Riverside Building, County Hall, London SE1 7PB, UK

The London Eye is a colossal Ferris wheel on the South Bank of the River Thames. Offering breathtaking panoramic views of the city, it has become an iconic part of the London skyline. Tourists can enjoy spacious glass capsules that provide unmatched vistas of landmarks like the Shard, Buckingham Palace, and the Tower Bridge. Riding the London Eye provides a unique and memorable experience, especially during sunset or nighttime when the city lights create a magical ambiance.



[Google Maps](#)

[Tickets](#)

[Nearby Hotels](#)

⑦ 16:00 - 18:30 Covent Garden, London

Covent Garden, London, UK

Covent Garden is a historic market area in the West End, famous for its street performers, theaters, boutique shops, and upscale restaurants. It's renowned for the Royal Opera House, making it a cultural hub for ballet and opera enthusiasts. Visitors can explore the market's diverse stalls, watch live performances, and enjoy a range of cuisines. Its unique blend of entertainment, shopping, and dining makes Covent Garden a captivating destination.



[Google Maps](#)

[Tickets](#)

[Nearby Hotels](#)

① 09:30 - 11:00 Soho, London

Soho, London, UK

Soho is a dynamic and culturally diverse district in London, renowned for its lively nightlife, theaters, restaurants, and historic landmarks. It's famous for its eclectic atmosphere, LGBTQ+ scene, and jazz clubs. Soho Square is a popular spot for relaxation, surrounded by elegant Georgian townhouses. With its rich history, diverse culinary scene, and entertainment options, Soho provides a vibrant and memorable experience for visitors.



[Google Maps](#)

[Tickets](#)

[Nearby Hotels](#)

② 11:00 - 12:00 Piccadilly Circus, London

Piccadilly Circus, London W1B, UK

Piccadilly Circus is one of London's most famous landmarks, akin to New York City's Times Square. It's a vibrant hub known for its dazzling electronic billboards, theaters, shops, and restaurants. Surrounded by historic buildings, this bustling square is a focal

point of London's West End, making it a perfect spot for entertainment, shopping, and dining. It's particularly enchanting at night when the neon lights illuminate the area, creating a lively atmosphere that captures the essence of London's energetic spirit.



[Google Maps](#)

[Tickets](#)

[Nearby Hotels](#)

③ 12:30 - 13:30 Trafalgar Square, London

Trafalgar Square, Charing Cross, London WC2N 5DN, UK

Trafalgar Square is a bustling public square in central London, surrounded by historic landmarks and cultural institutions. It's famous for Nelson's Column, commemorating Admiral Nelson's victory at the Battle of Trafalgar. The square is a hub of cultural events, protests, and celebrations. Tourists often visit to admire the fountains, sculptures, and the iconic facade of the National Gallery. During festivals, it transforms into a lively space with music, art installations, and performances.



[Google Maps](#)

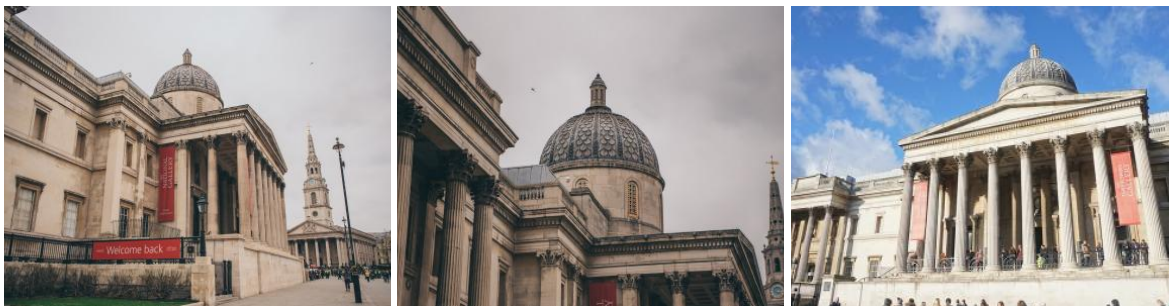
[Tickets](#)

[Nearby Hotels](#)

④ **13:30 - 15:30** The National Gallery, London

Trafalgar Square, London WC2N 5DN, UK

The National Gallery is one of the world's premier art museums, located at Trafalgar Square. Home to a vast collection of Western European paintings from the 13th to the 19th centuries, it boasts works by masters such as Van Gogh, Da Vinci, and Monet. Art enthusiasts and tourists flock here to admire these masterpieces for free, making it a must-visit for anyone interested in art history and culture.



[Google Maps](#)

[Tickets](#)

[Nearby Hotels](#)

⑤ 16:00 - 17:00 Leicester Square, London

Leicester Square, London, UK

Leicester Square is London's entertainment epicenter, renowned for its vibrant atmosphere, theaters, cinemas, and nightlife. It's famous for hosting film premieres and housing iconic theaters like the London Hippodrome. Tourists love visiting Leicester Square for its numerous restaurants, bars, and clubs, which make it a great spot for dining and entertainment. The square's energetic ambiance and proximity to the West End's theaters make it a hotspot for both locals and tourists alike.



[Google Maps](#)

[Tickets](#)

[Nearby Hotels](#)

⑥ 17:00 - 19:00 West End, London

West End, London, UK

London's West End is renowned for its world-class theaters, musicals, and entertainment. It's famous for its vibrant nightlife, historic venues like the London Palladium, and the dazzling lights of theaters along Shaftesbury Avenue. From classic plays to cutting-edge performances, the West End offers a diverse array of shows, making it a hub for theater enthusiasts and a lively district for visitors seeking top-notch entertainment.



[Google Maps](#)

[Tickets](#)

[Nearby Hotels](#)

① 10:00 - 12:00 Victoria and Albert Museum, London

Cromwell Rd, London SW7 2RL, UK

The Victoria and Albert Museum, often called the V&A, is the world's leading museum of art, design, and performance. It houses a vast and diverse collection, including fashion, textiles, ceramics, and decorative arts. The museum's exquisite exhibits span centuries and cultures, offering insights into the evolution of human creativity. With its remarkable displays, the V&A provides an enriching experience for art connoisseurs and history buffs.



[Google Maps](#)

[Tickets](#)

[Nearby Hotels](#)

② 12:30 - 13:30 Hyde Park, London

London, UK

Hyde Park is London's largest royal park, spanning 350 acres of lush greenery, lakes, and recreational spaces. It's famous for the Serpentine Lake, boating activities, and the Speaker's Corner, where people gather for public speeches and debates. The park hosts concerts, festivals, and outdoor events, attracting locals

and tourists alike. With its vast open spaces and diverse attractions, Hyde Park is perfect for outdoor activities, relaxation, and social gatherings.



[Google Maps](#)

[Tickets](#)

[Nearby Hotels](#)

③ **14:00 - 14:30 Kensington Gardens, London**

London W2 2UH, UK

Kensington Gardens, adjoining Kensington Palace, is one of London's most enchanting green spaces. Famous for the serene Round Pond, the Italian Gardens, and the Peter Pan statue, it offers scenic views and leisurely strolls. The gardens are a perfect spot for picnics, enjoying the sunshine, and immersing oneself in the beauty of nature. Its proximity to cultural attractions makes it an ideal starting point for exploring the area.



④ 14:30 - 15:30 Kensington Palace, London

Kensington Gardens, London W8 4PX, UK

Kensington Palace, a royal residence for centuries, is famous as the childhood home of Queen Victoria and the current residence of several members of the royal family. Visitors can explore the State Apartments, admire the stunning King's and Queen's State Apartments, and learn about royal history in the Victoria Revealed exhibition. Its regal charm and historical significance make it a captivating destination for history buffs and royal enthusiasts.



⑤ 17:00 - 18:00 Portobello Road Market, London

Portobello Rd, London W10 5TY, UK

Portobello Road Market, located in Notting Hill, is one of the world's largest antique markets. It's famous for its diverse range of antiques, vintage clothing, and bric-a-brac. The market's vibrant atmosphere, street performers, and eclectic items make it a fascinating destination for collectors and tourists looking for unique souvenirs.



[Google Maps](#)

[Tickets](#)

[Nearby Hotels](#)

⑥ 18:00 - 19:30 Notting Hill, London

Notting Hill, London, UK

Notting Hill, renowned for its elegant Victorian townhouses and colorful houses, is a charming district in West London. Famous for the Portobello Road Market, antique shops, and the annual Notting Hill Carnival, it's a lively area with a distinct character. Visitors enjoy strolling through the streets, exploring unique boutiques, and soaking in the neighborhood's artistic and bohemian ambiance.



[Google Maps](#)

[Tickets](#)

[Nearby Hotels](#)

① 09:30 - 10:30 Little Venice, London

Little Venice, London, UK

Little Venice is a picturesque area in West London, famous for its waterways, houseboats, and waterside cafes. It's a peaceful oasis in the city, offering scenic boat rides along the canals, charming waterside pubs, and a tranquil ambiance. Visitors can enjoy leisurely walks along the water's edge, making it a delightful hidden gem in the heart of London.



[Google Maps](#)

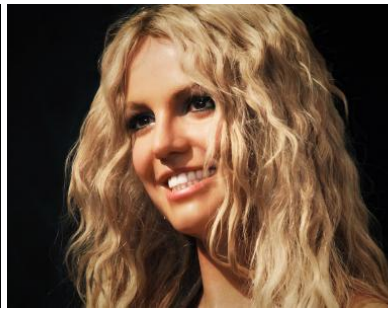
[Tickets](#)

[Nearby Hotels](#)

② 11:30 - 13:00 Madame Tussauds, London

Marylebone Rd, London NW1 5LR, UK

Madame Tussauds is a globally acclaimed wax museum, featuring lifelike wax figures of celebrities, historical figures, and cultural icons. Visitors can pose with their favorite stars, from actors to political leaders, and engage with interactive exhibits. It's a popular attraction for fans of pop culture, offering a unique opportunity to get up close with famous personalities in an entertaining and interactive environment.



[Google Maps](#)

[Tickets](#)

[Nearby Hotels](#)

③ **13:30 - 14:00 The Sherlock Holmes Museum, London**

221b Baker St, London NW1 6XE, UK

The Sherlock Holmes Museum, located at 221B Baker Street, is a tribute to Sir Arthur Conan Doyle's iconic detective. Famous for its Victorian-era decor, the museum is designed as Holmes' fictional residence. Visitors can explore themed rooms, see period-specific artifacts, and feel immersed in the world of Sherlock Holmes. It's a must-visit for fans of the detective series, offering an immersive experience into the mysteries of 221B Baker Street.



[Google Maps](#)

[Tickets](#)

[Nearby Hotels](#)

④ 15:00 - 16:00 The Regent's Park, London

London, UK

The Regent's Park is one of London's most picturesque parks, featuring elegant gardens, boating lakes, and the renowned Open Air Theatre. It's famous for its stunning rose gardens and the London Zoo, making it a family-friendly destination. Joggers, picnickers, and nature lovers appreciate its vast green spaces and the diverse range of flora and fauna, creating a serene urban oasis.



[Google Maps](#)

[Tickets](#)

[Nearby Hotels](#)

⑤ 17:00 - 18:00 Camden Market, London

Camden Lock Pl, Camden Town, London NW1 8AF, UK

Camden Market, within Camden Town, is one of London's most famous markets. Spread over several interconnected markets, it offers a diverse range of goods, from vintage clothing and handmade crafts to international street food. The market's lively atmosphere, live music, and unique products draw visitors seeking a taste of London's creative and multicultural essence.



[Google Maps](#)

[Tickets](#)

[Nearby Hotels](#)

⑥ 18:00 - 19:00 Camden Town, London

Camden Town, London, UK

Camden Town is a vibrant neighborhood known for its eclectic atmosphere, diverse culture, and lively music scene. Famous for its alternative fashion, street art, and quirky shops, it's a hub for creativity and youth culture. Camden Market, in particular, offers an array of unique stalls, global cuisine, and vintage finds, making it a haven for shoppers and explorers alike.



[Google Maps](#)

[Tickets](#)

[Nearby Hotels](#)

① 09:00 - 09:30 Tower Bridge, London

Tower Bridge Rd, London SE1 2UP, UK

Tower Bridge is one of London's most recognizable landmarks, known for its majestic Victorian Gothic design and drawbridge mechanism. Visitors can explore the Tower Bridge Exhibition, featuring interactive displays and high-level walkways that provide panoramic views of the city. It's an engineering marvel and a testament to Victorian ingenuity. The bridge's beauty, history, and the opportunity to witness it in action make it a captivating destination for tourists and history enthusiasts alike.



[Google Maps](#)

[Tickets](#)

[Nearby Hotels](#)

② 09:30 - 10:30 Tower of London

St Katharine's & Wapping, London EC3N 4AB, UK

The Tower of London, steeped in history dating back over 1,000 years, is an iconic fortress and former royal residence. It's famous for its role as a prison, housing historical figures like Anne Boleyn, and for the breathtaking Crown Jewels, on display for visitors. The Tower offers guided tours by Yeoman Warders,

known as Beefeaters, who share captivating stories. Its historical significance and the intrigue of royal heritage make it a must-visit, providing a glimpse into England's rich past.



[Google Maps](#) [Tickets](#) [Nearby Hotels](#)

③ **11:00 - 12:00 The View from The Shard, London**

32 London Bridge St, London SE1 9SG, UK

The Shard, London's tallest skyscraper, hosts The View from The Shard, an observation deck offering 360-degree views of the city. Visitors can enjoy unparalleled panoramas of London's landmarks, both day and night. The experience provides a spectacular way to appreciate the city's architecture, culture, and urban landscape, making it a must-visit for travelers seeking awe-inspiring views.



4

12:00 - 13:00 Borough Market, London

8 Southwark St, London SE1 1TL, UK

Borough Market is London's most renowned food and drink market, celebrated for its diverse culinary offerings and artisanal products. Dating back to the 12th century, it's a paradise for food lovers, offering fresh produce, gourmet delights, international cuisines, and delectable street food. The market's vibrant atmosphere, food-tasting opportunities, and the chance to interact with passionate vendors create a delightful experience, making it a haven for gastronomes.



⑤ **13:30 - 14:30** Shakespeare's Globe, London

21 New Globe Walk, London SE1 9DT, UK

Shakespeare's Globe, a faithful reconstruction of the original Globe Theatre, is an emblem of the Bard's literary legacy. It's famous for its Shakespearean productions, capturing the essence of Elizabethan theater. Visitors can enjoy live performances of Shakespeare's works in an authentic setting, experiencing the plays as they were performed in the 16th century. The Globe's unique atmosphere and thespian magic make it a must-visit for theater aficionados and fans of classical drama.



[Google Maps](#)

[Tickets](#)

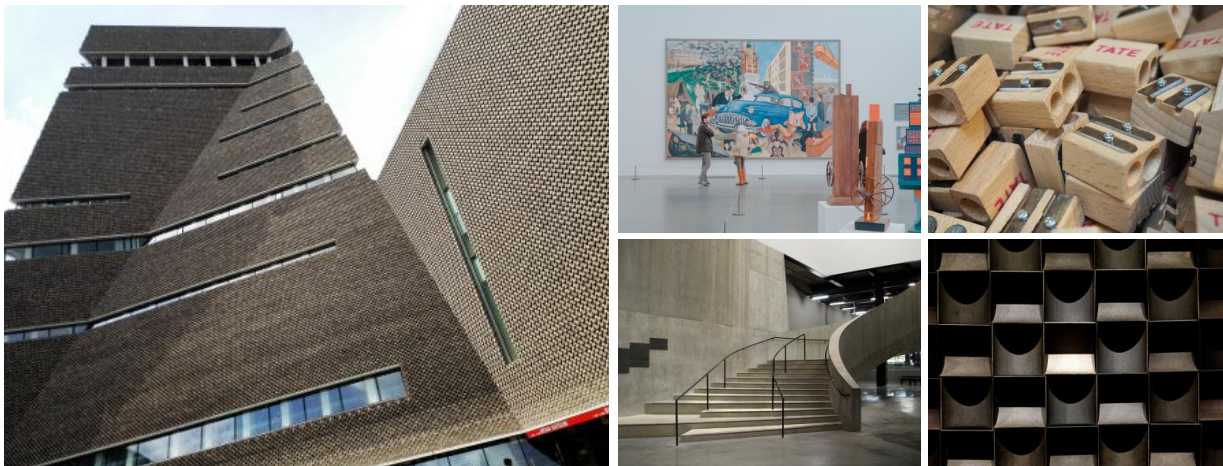
[Nearby Hotels](#)

⑥ **15:00 - 17:00** Tate Modern, London

Thames Embankment, London SE1, UK

Tate Modern is one of the world's leading modern art galleries, housed in a former power station along the River Thames. It's renowned for its impressive collection of contemporary artworks, including masterpieces by Picasso, Warhol, and Hockney. The museum's avant-garde exhibitions and installations showcase diverse artistic expressions, providing a thought-provoking experience for art enthusiasts. Its striking architecture and the opportunity to explore groundbreaking art make it a vibrant hub

for contemporary creativity.



[Google Maps](#) [Tickets](#) [Nearby Hotels](#)

7 17:00 - 17:30 St. Paul's Cathedral, London

St. Paul's Churchyard, London EC4M 8AD, UK

St. Paul's Cathedral, designed by Sir Christopher Wren, is an architectural masterpiece and an iconic symbol of London. Famous for its magnificent dome and Baroque style, the cathedral boasts breathtaking interior decorations, including the Whispering Gallery and the Golden Gallery, offering panoramic city views. It's a place of worship, historical significance, and architectural grandeur, making it a must-visit for those interested in London's religious and cultural heritage.



[Google Maps](#)

[Tickets](#)

[Nearby Hotels](#)