

Best Museums in Tokyo, Japan



Tokyo is a great city for museum lovers, offering an impressive range of institutions dedicated to art, history, and science. The city is home to world-renowned museums like the Tokyo National Museum, which boasts an extensive collection of Japanese art, including ancient Buddhist statues, samurai swords, and colorful ukiyo-e woodblock prints. Other notable museums include the Edo-Tokyo Museum, which showcases the history and culture of Tokyo during the Edo period, and the Mori Art Museum, which features contemporary art from Japan and around the world. Additionally, Tokyo is home to the National Museum of Emerging Science and Innovation, which offers a fascinating glimpse into the latest technological innovations.

Tokyo's museums are a must-see for anyone interested in the rich cultural history of Japan and its impact on the modern world.

Trip Summary

Day 1

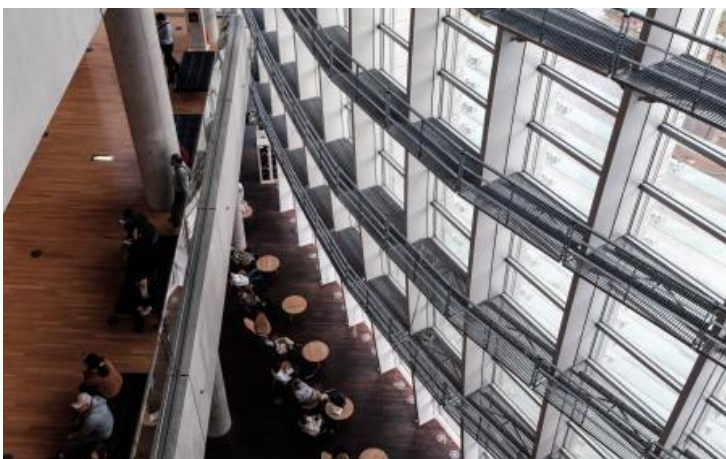
- ① Tokyo National Museum, Tokyo [Google Maps](#)
- ② teamLab Planets TOKYO [Google Maps](#)
- ③ Edo-Tokyo Museum, Tokyo [Google Maps](#)
- ④ National Museum of Emerging Science and Innovation, Tokyo [Google Maps](#)
- ⑤ National Museum of Western Art, Tokyo [Google Maps](#)
- ⑥ Nezu Museum, Tokyo [Google Maps](#)
- ⑦ Samurai Museum, Tokyo [Google Maps](#)

Day 1

① **Tokyo National Museum, Tokyo**

13-9 Uenokōen, Taito City, Tōkyō-to 110-8712, Japan

The excellent Tokyo National Museum is the oldest and largest museum in Japan, with a collection that spans over a thousand years of Japanese art and history.



[Google Maps](#)

[Tickets](#)

[Nearby Hotels](#)

② **teamLab Planets TOKYO**

6-chōme-1-16 Toyosu, Koto City, Tokyo 135-0061, Japan

teamLab Planets TOKYO is an interactive digital art museum located in Odaiba, Tokyo. The spectacular museum features a variety of interactive exhibits that are designed to be touched and explored. The exhibits include digital art, light displays, and interactive installations. It's a great place to experience cutting-edge technology and digital art.



[Google Maps](#)

[Tickets](#)

[Nearby Hotels](#)

③ **Edo-Tokyo Museum, Tokyo**

1-chōme-4-1 Yokoami, Sumida City, Tokyo 130-0015, Japan

The Edo-Tokyo Museum is a museum located in Ryogoku, Tokyo. The museum is dedicated to the history of Tokyo, from the Edo period to the present. The museum features a variety of exhibits, including interactive displays, dioramas, and artifacts. It's an excellent place to learn about the history of Tokyo and to see some of the city's most important historical artifacts.



[Google Maps](#)

[Tickets](#)

[Nearby Hotels](#)

④ **National Museum of Emerging Science and Innovation, Tokyo**

2-chōme-3-6 Aomi, Koto City, Tokyo 135-0064, Japan

The National Museum of Emerging Science and Innovation, also known as the Miraikan, is a science museum located in Odaiba, Tokyo. The museum features interactive exhibits that explore various aspects of science and technology, including robotics, space exploration, and global environmental issues.



[Google Maps](#)

[Tickets](#)

[Nearby Hotels](#)

⑤ **National Museum of Western Art, Tokyo**

7-7 Uenokōen, Taito City, Tokyo 110-0007, Japan

Tokyo National Museum of Western Art is a fascinating museum and the only national museum in Japan that is dedicated to the art of the Western world.



[Google Maps](#)

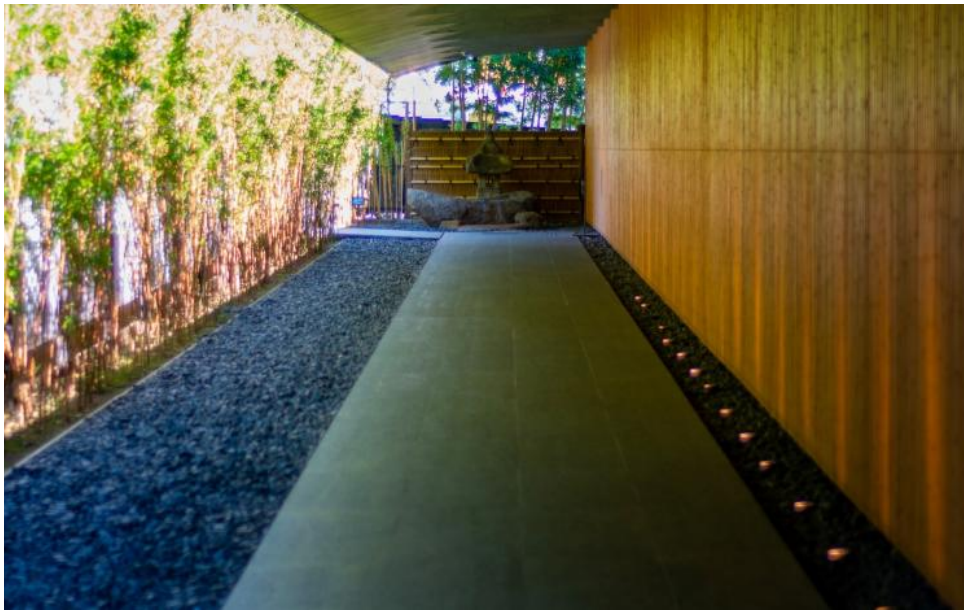
[Tickets](#)

[Nearby Hotels](#)

⑥ **Nezu Museum, Tokyo**

6-chōme-5-1 Minamiaoyama, Minato City, Tokyo 107-0062, Japan

The Nezu Museum is an art museum located in the Minato district of Tokyo. The museum is known for its excellent collection of Japanese and East Asian art, which includes pottery, bronze, and scrolls. The fantastic museum also features a traditional Japanese garden, which is particularly charming in the spring.



[Google Maps](#)

[Tickets](#)

[Nearby Hotels](#)

⑦ **Samurai Museum, Tokyo**

Japan, 〒160-0021 Tōkyō-to, Shinjuku City, Kabukichō,
2-chōme–25–1 6 1F–2F

The Samurai Museum is a fascinating museum located in Tokyo that is dedicated to the history and culture of the samurai, the elite warrior class of feudal Japan. The museum features a collection of samurai armor, weapons, and artifacts, as well as interactive exhibits and live demonstrations of samurai sword fighting. The museum also has a small collection of traditional Japanese art and artifacts. It's a great place to learn about the samurai and their role in Japanese history.



[Google Maps](#)

[Tickets](#)

[Nearby Hotels](#)